



H  
I  
G  
H  
  
I  
M  
P  
A  
C  
T

Making a difference in  
Cranberry Township

Annual Report 2010-2011



WESTINGHOUSE HELPS OUR  
**communities**  
**accomplish**  
**great things.**

For more than 120 years, Westinghouse employees have been dedicated to serving the communities where we work and live with the same commitment to excellence that we apply to our commercial nuclear products and services. When our communities accomplish great things, we ensure a strong foundation for generations to come.

The people of Westinghouse Electric Company are proud to help provide future generations with safe, clean and reliable electricity.

Check us out at  
[www.westinghousenuclear.com](http://www.westinghousenuclear.com)



You can be sure...  
 if it's Westinghouse

WESTINGHOUSE ELECTRIC COMPANY LLC

**EAT GREAT. GET CONNECTED.**  
**HAVE FUN. WIN PRIZES.**



**SPONSORED BY:**



TV • Internet • Phone • The Phone Book

**CELEBRATE CRANBERRY'S NONPROFIT & CIVIC ORGANIZATIONS**

- Recycled Art Contest
- Scavenger Hunt
- July 8 - Rotary BBQ
- July 9 - Lion's Pancake Breakfast
- Carnival
- Nonprofit Midway
- Celebrity Lunch Auction
- Treasure Hunts
- July 8 American Heart Assn. Bean Bag Contest
- Run For Your Library 5K Race
- Three Free Concerts
- Over 75 3-day booths and 100 1-day booths

**THE BIGGEST SUMMER EVENT IN CRANBERRY AND SURROUNDING AREA!**

- Free Concerts:
- July 7: The Buffeman "Margaritaville in Cranberry" (Jimmy Buffett tribute)
  - July 8: Corbin Hanner Country Band (Record holder for largest crowd in Cranberry)
  - July 9: Johnny Angel and The Halos

# Welcome to the CTCC/CLE 2010-2011 Annual Report

## Table of Contents

CTCC Board of Directors 2010-2011 .....	3
Community Projects of the Year.....	4
What did CTCC do in 2010 for our Community?.....	5
The Cranberry Legacy Endowment .....	7
New Endowment for 2011 .....	8
CTCC Chamber Fund Citizen and Business of the Year .....	8
Legacy Endowments for Cranberry Library .....	9
Parks & Recreation Endowment .....	10
Five steps to giving .....	11
What can your Legacy Endowment accomplish? .....	13
Fund Administration and Management.....	13
Business Donors .....	14
Individual Donors .....	15
Faith Communities .....	16
Nonprofit Organization Profiles.....	17
Volunteers.....	24

## CTCC Board of Directors, 2010

Michele Skubak, *President*  
 Bob Gillenberger,  
*Vice President*  
 Gretchen Moran, *Secretary*  
 Bruce Mazzoni, *Treasurer*  
 Cindy Marzock  
 Karen Newpol  
 Dan Storrs  
 Roy Wagner

### Past CTCC Board Members

#### Still Active:

Frank Petrone  
 Terry Pearce



Top Row: Roy Wagner, Bob Gillenberger, Michele Skubak, Cindy Marzock.  
 Bottom Row: Gretchen Moran, Karen Newpol, Dan Storrs, Bruce Mazzoni.

## Message from the board

With your help, we have come a long way in the four years since Community Chest was reorganized. We've hosted Community Days, turning it into a three-day event with a special emphasis on our local nonprofit and civic groups. With help from The Chamber, we started the Four Pillar Cranberry Alliance, a local brain trust, as well as a new community foundation, the Cranberry Legacy Endowment. This year we are also starting a new venture – our Project of the Year – in which nonprofit/civic groups work together to bring new resources and services into our community. This year's annual report highlights all the ways you have helped CTCC to succeed. Thank you!

## 2010 Community Project of the Year: Cranberry Community Sign

For a number of years prior to 2004, a community information sign sat along Freedom Road, where today's Exxon station is located. Owned and maintained by Cranberry Rotary, it provided basic information about upcoming events in the Township. It enjoyed high local readership which was credited with helping many of the events it publicized succeed.

Eventually, the need for additional highway right-of-way meant the sign had to be taken down. But the need for sharing timely information never went away. So last year, the decades-old old idea of a community information board featuring reliable, non-commercial information, came back yet again.

CTCC, which underwent a revitalization in 2008, formed a coalition of partners including Rotary, the Lions, the Chamber of Commerce, and the Township government to make building a new community sign their signature project of the year for 2011. The state-of-the-art sign – situated in front of UPMC's Cranberry Campus – is enabling local nonprofits with events coming up to promote them to passing motorists. As many as 140,000 vehicles a day cross through that intersection. While they're waiting for the light to change, they can see 12-foot wide, full-color electronic displays which are capable of being changed remotely as often as needed. Management of the message boards is handled by Township staff members, but the opportunity to post messages is open to all of the approximately 40 partner agencies of CTCC.



## 2011 Community Project of the Year: Saluting Scouts 100th Anniversary

The Boy Scouts of America marked its 100th anniversary last year. The Girl Scouts of America will observe their centennial next year. Both organizations have made important contributions to American life and to Cranberry Township. In their honor, we are looking toward a project – not yet finalized – which would feature a commemorative monument and stone plaza at the edge of a fishing pond already under development in Graham Park near the baseball campus.

One version of the monument would include a triptych engraved in stone to show the life cycle of someone dedicated to public service. The plaza would become a place where scouts not only can come to fish, but to have important services, flag retirements, courts of honor, important moments in their year. The project would involve the installation of walking trails from the park's undeveloped natural area to the pond, as well as making it accessible to people with disabilities. If we decide to keep it as a private fishery, we can stock it, determine our own seasons, and set our own limits as well as any other restrictions. We can have tournaments and give the Scouts an opportunity for fund raising, through fishing derbies.



## 2012 Community Project of the Year: Replacing Playtime Palace

Playtime Palace has been the signature structure of Community Park ever since it was built with the help of 800 volunteers over a five-day period in 1990. It has been in constant use and repeatedly refurbished to keep it in safe and playable condition. But weathering and splintering have been growing concerns, and its replacement is becoming timely. Cranberry CUP announced in June that it would accept a leadership role in implementing the 2012 project – a new play structure which not only provides the variety of Playtime Palace, but also incorporates more of the current thinking and practice regarding playground architecture. We thank Cranberry CUP for being the major sponsor of the playground project and we encourage everyone to become involved in its softball tournament and other activities this August 5, 6, and 7.

No one knows at this point what a new playground would look like; those details will come out this fall as we talk to parents and community organizations with help from a planning professional to guide the process. But it will be a major community undertaking that will position Cranberry well for the next generation of children.

# What Did CTCC Do In 2010... For Our Community?



**Cranberry Alliance.** A group of 15 people, representing each of the Four Pillars of Cranberry Township, has begun meeting every other month. Their agenda: to discuss Cranberry's current and future needs with a view to building a stronger community.

The Cranberry Alliance was created through a partnership of CTCC and The Chamber and was able to make a positive impact on the community in 2010.



**The Cranberry Legacy Endowment.**

A new community foundation was launched by CTCC in 2010. Its mission is to benefit local non-profit/civic groups by establishing dedicated endowments to provide a perpetual source of income for specific community organizations.

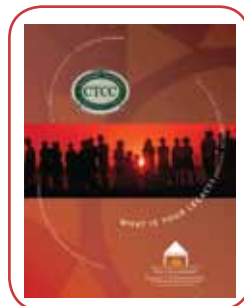
We have already established more than a dozen endowments with assets exceeding \$425,000. This new source of financial support will have large impact on Cranberry and its nonprofit/civic groups going forward. To learn more, go to: [www.cranberrylegacyendowment.org](http://www.cranberrylegacyendowment.org).

**Community Project of the Year:**



The new Community Sign at the corner of Routes 19 and 228 was CTCC's first Community Project of the Year. It grew from the idea of encouraging nonprofit/civic groups to join together in making larger projects a reality. The sign displays community announcements and promotes non-profit/civic group events.

The sign was a combined effort of The Chamber, the Lions, Rotary, UPMC, Cranberry Township and CTCC. Each group contributed \$17,500 to make this sign a reality.



**CTCC's Annual Report** is sent to every Cranberry home and business in June prior to CTCC Community Days. The report explains our core mission, encouraging residents and businesses to become involved with local nonprofits and civic groups. It provides them with an opportunity to find out about dozens of nonprofit groups and how to support or join them. We also recognize more than

600 residents nonprofit members who volunteered at least 50 hours to our nonprofit/civic groups during the prior year.



**Feeding the Community.** During CTCC Community Days, many individuals and businesses stepped up to provide free meals to families in need. Food distributions, in tandem with the Rotary and Lions Clubs, included vouchers and delivered meals of Rotary chicken or Lion's pancakes to more than 450 people.



**Gleaners food bank.** Gleaner's Food Bank is a non-denominational organization serving Cranberry Township residents who meet Butler County's income guidelines for food assistance. The food bank always needs and gladly accepts donations of non-perishable food items as well

as monetary donations. At different times of year, a number of local organizations have held food drives to replenish the food bank's cupboard, which is located in an annex building at St. Ferdinand's Church. Working with the Cranberry Township Seniors Club, CTCC held a food drive that raised money for the Gleaners Food Bank.



**Miracle League.** The Pirates Charities Miracle Field in Graham Park opened a new dimension in recreational opportunities for people with disabilities throughout the tri-state area. With its special rubberized playing surface, its accommodating rules, and its liberal use

of player buddies, Miracle Field was an immediate success. In recognition of its importance to our community, CTCC contributed \$10,000 worth of future improvements to the Miracle League ball park.



**VOICE.** Victim Outreach Intervention Center, or VOICE, operates an emergency crisis shelter in Cranberry that provides free, confidential services to individuals and families who are survivors of

violent crime. It works to bring about social change and provide survivors with the skills and resources to take control of their lives. It also provides an emergency hotline, manned around the clock by a trained staff and corps of volunteers, all of whom have completed survivor issues training. With help from the Grace Community and Fountain Park churches, CTCC raised \$8,000 in support of the Victims Outreach Intervention Center shelter by collecting \$5 parking donations on Saturday, during Community Days.



**2011 Community Project of the Year:**

For the 100th anniversary of Scouting, CTCC dedicated \$9,000 to do preliminary engineering and grant development of a commemorative monument and stone plaza at the edge of a fishing pond currently under development

in Graham Park. The monument would include three panels depicting the life cycle of someone dedicated to scouting. The plaza would become a place where scouts not only can come to fish, but to have important services, flag retirements, courts of honor, and other important moments in their year.



**CTCC Community Days.** This exuberant celebration of Cranberry's nonprofit and civic groups saw more than 30 organizations raise in excess of \$125,000 during our three-day event. More than 22,000 people

attended and over 450 others volunteered. More than \$1 million of business was transacted at the event's 185 booths.

How can you help your community and leave a legacy in the process?

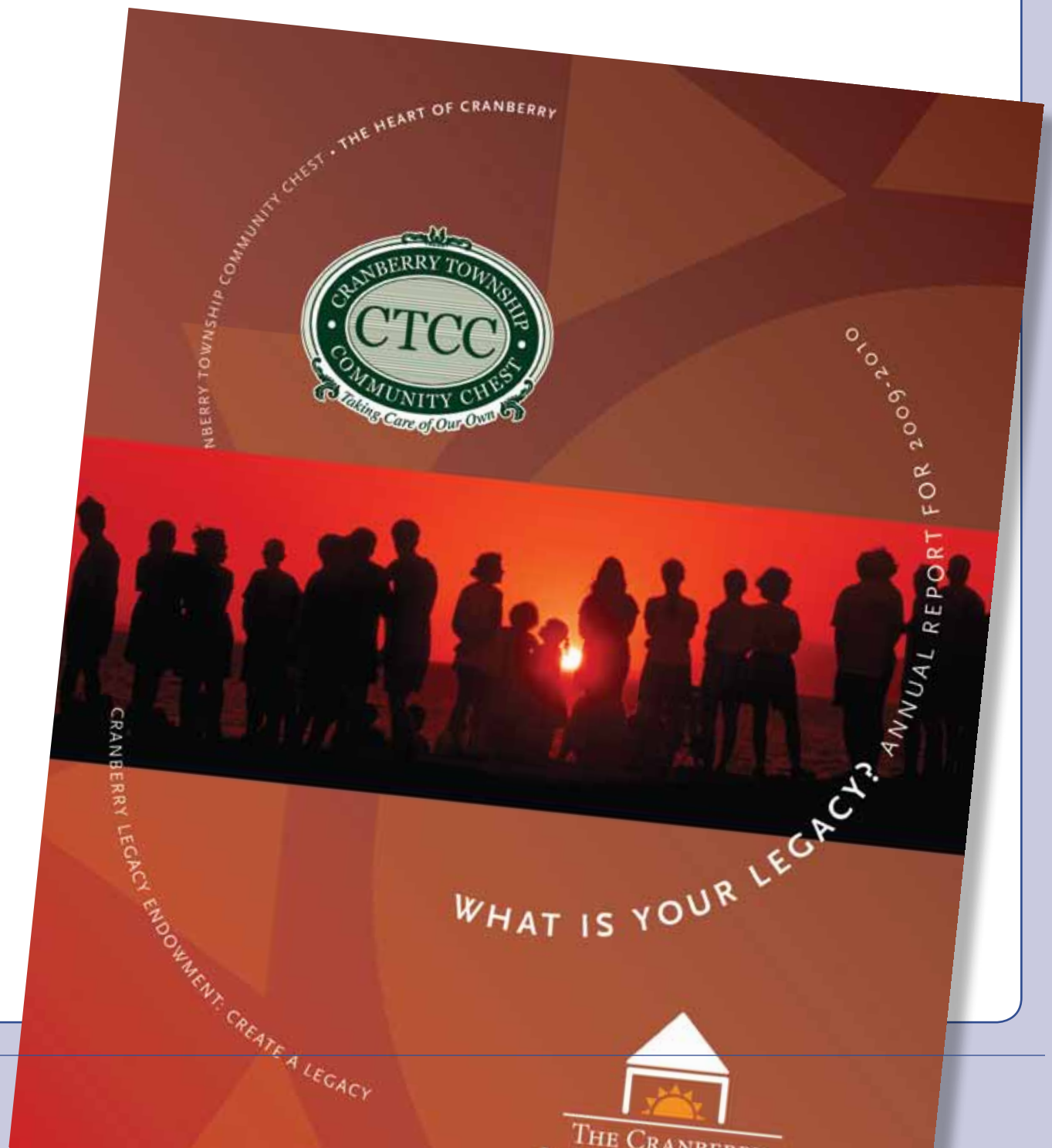
Start an endowment. Go to page 11 for step-by-step guidelines.



Pick up your copy of the new Cranberry Legacy Endowment brochure at the Cranberry Municipal Center or from any one of our member organizations.

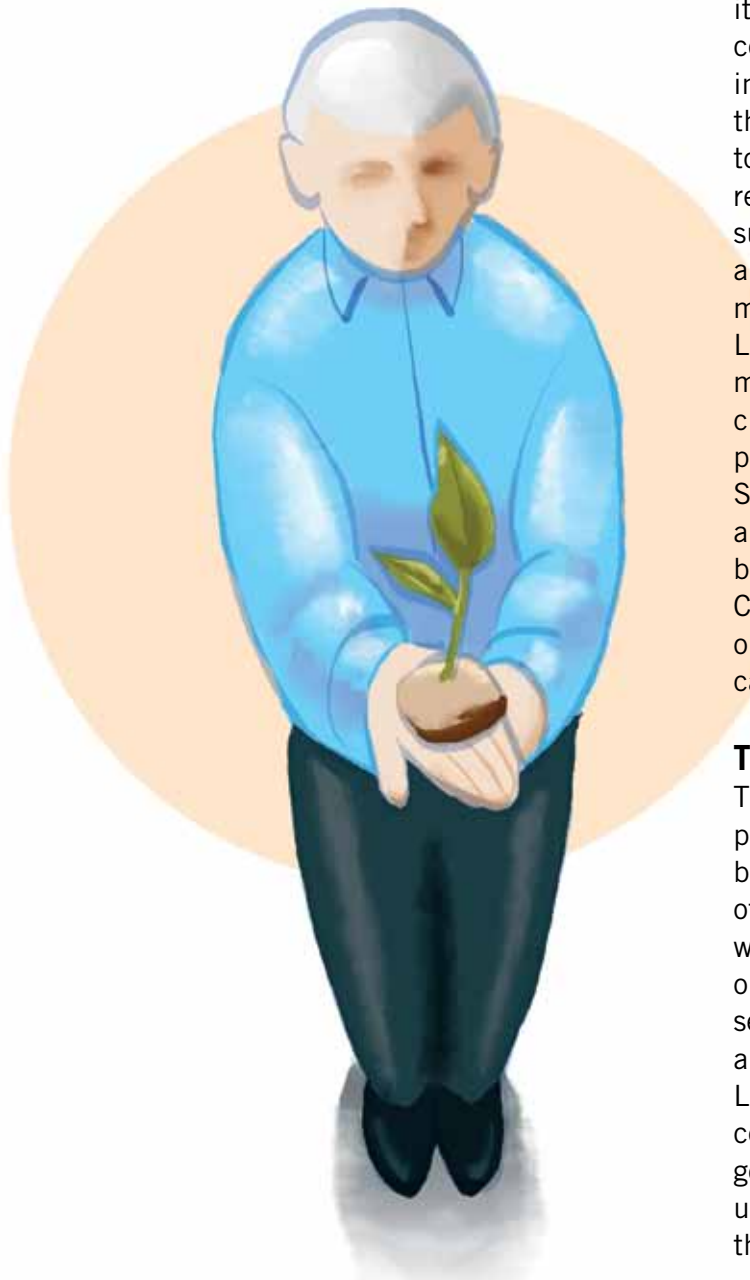
Or, return the enclosed envelope to request that one be sent to you.

Or go to our website, at:  
[www.cranberrylegacyendowment.org](http://www.cranberrylegacyendowment.org).



# Creating a legacy. Planting the seed.

**Cranberry Township is a great place to live, work and play.** But maintaining and advancing its high quality of life during a time of rapid growth requires a strong social infrastructure as well as a healthy physical environment. The Cranberry Legacy Endowment was created as a vehicle to reinforce that infrastructure by helping to support the Township's nonprofit organizations, strengthen its voluntary sector, and promote civic engagement by local businesses and residents. Creating a lasting legacy through the Cranberry Legacy Endowment is both easy and affordable. And it will help to assure the vitality of our community forever. Find out more about how you can leave your own permanent legacy.



## **Background**

The Cranberry Legacy Endowment celebrates our shared values by engaging the entire community in both its programs and services. The concept behind it emerged from the Township's work on a 25-year comprehensive plan. Hundreds of residents were involved throughout the planning process. Together they determined how they would like their community to look in 2030. As part of the process, project teams researched other model communities and found that successful communities are distinguished by healthy and growing nonprofit sectors that provide their communities with assets and services. The Cranberry Legacy Endowment is a nonprofit organization managed by volunteers from local nonprofit and civic groups. They share a belief in the power of permanent endowments to strengthen communities. Since its inception in November of 2009, more than a dozen legacy endowments have been created to benefit specific nonprofit and civic organizations in Cranberry Township. The Legacy Endowment focuses on keeping these groups financially healthy so they can continue their missions for decades to come.

## **The Mission**

The Cranberry Legacy Endowment was created to provide a home for what would grow to become hundreds of named endowments, with tens of millions in assets. Income from those assets would be distributed annually to enhance and grow our community's nonprofit and civic groups. Their services, in turn, will make Cranberry, Butler County, and the surrounding area a even better place to live. Legacy Endowments allow the name and spirit of committed community members to endure for future generations. And it plants the seeds for others to step up and support their communities by establishing their own endowments.



### **Barbara Blackstone Library Fund (2011)**

Long-term resident Barbara Blackstone can recall the days when there was no Cranberry library and just one traffic light at Rt. 228. Her four children, who became voracious readers, would borrow during Carnegie Library Bookmobile visits or on trips to the small library housed in Mars.

As President of the Rowan School PTA, Barbara and a group of mothers decided to start a school library as well as a public one, housed in the original Township Building. They were granted a small space for readers, but the books were stored in a closet in the one-story building. When the Township added a second floor, the “library” moved upstairs.

As a member of the North Pittsburgh Fine Arts League, Barbara secured federal funding – designated for those identified as “culturally deprived” – to bring ensembles from the Pittsburgh Symphony to Rowan School for concerts. Although it was hard to get Symphony members to add Haine School to their schedule, Barbara prevailed. She even got federal funds to provide buses to take students on field trips for Heinz Hall performances with their mothers as “chaperones.”

In 1991, Cranberry’s new Township building gave the nascent library some space, and Carol Troese joined as a professional librarian, but many volunteers worked as staff members. Barbara, who had trained in Speech Pathology at Iowa, joined the Speech Department at Slippery Rock University and pursued her doctorate in Education Communication at Pitt.

Barbara is currently a volunteer instructor for Slippery Rock’s Institute of Learning in Retirement and is serving a second term on Cranberry’s Library Board. “These days you don’t just get a library given to you by another Andrew Carnegie,” she said. “But Cranberry’s Legacy Fund comes close as a way to help our good achievements get even better. That’s what ‘Legacy’ means: Looking Back and Giving Forward.”

## **CTCC-Chamber Fund Citizen and Business of the Year 2011**

### **Business of the Year**



UPMC, Cranberry Township’s leading healthcare provider, was selected by CTCC and The Chamber as its Business of the Year for 2011. UPMC, which is Southwestern Pennsylvania’s largest employer, was also recently named among America’s Best Hospitals by U.S. News & World Report. One of just 14 hospitals to be so honored, it was the 11th time that UPMC had received that recognition.

The CTCC/Chamber recognition not only affirms UPMC’s role as a leader in providing advanced medical treatment, it also affirms UPMC’s position as an institution with a commitment to bettering life in the many communities it serves. In addition to supporting the health of local residents through clinical practice and educational outreach, UPMC offered to provide the funding to launch CTCC’s first Annual Report following CTCC’s reorganization four years ago. UPMC has also partnered with Cranberry Township in providing close coordination and leadership in the community’s public safety functions. And recently, it gave permission to place CTCC’s new community information sign on UPMC property at the corner of Routes 19 and 228. For all that and more, we are pleased to designate UPMC as Cranberry’s 2011 Business of the Year.

### **Previous Honorees**

**Mashuda Corporation – 2009**

**Mine Safety Appliances – 2010**

## Citizen of the Year 2011

### Mike Sherry



While working for a previous employer, Cranberry resident Mike Sherry had the opportunity to see a Miracle League baseball game being played in Alabama. It made a lasting impression and when, some years later, his own daughter was diagnosed with autism, the significance of Miracle League and the opportunity it opened for children with disabilities became immediate and personal. As a Little League

coach for the Cranberry Township Athletic Association, Sherry was keenly aware that allowing children with disabilities to play required a special League exception – a situation he felt should be remedied by extending Alabama’s Miracle League model to his own home town.

For several years, Sherry and his wife Chris carried out a high-energy campaign to convince local parents, businesses, sports associations, foundations and public officials to support the idea. With the planned construction of Cranberry’s new Graham Park on the near horizon, they knew the timing was right. And when the Pirates Charities and player Freddy Sanchez came on board, things fell quickly into place.

Today, the unique playing field is paved with a rubber surface that enables athletes with walkers and wheelchairs to move around the bases safely. Miracle League of Southwestern Pennsylvania hosted its grand opening on May 16, 2009. The organization has received support from more than 600 local volunteers and attracted more than 300 sponsors and financial donors. In recognition of his enthusiastic leadership, Mike Sherry was named the Post-Gazette’s 2010 Jefferson Award Winner and the CTCC-Chamber Citizen of the year 2011.

### Previous Honorees

**Chris DeCree, Dave Berneberg – 2009**

**Cathy Cortazzo – 2010**

### Other CTCC Endowments



**Legacy Endowments to benefit CTCC Bruce and Connie Mazzoni CTCC Fund (2008).** Bruce is the immediate past President of CTCC and one of three leaders who helped establish its new direction. “CTCC will have a positive impact on our community by helping to increase membership among our nonprofit and civic organizations,” he said. “It has been a real privilege to be on the ground floor of CTCC and, with many of my fel-

low board members, to help launch a program that will help strengthen our sense of community.” Bruce has been a Cranberry Township Supervisor since January, 2005.

### Community Days CTCC Fund



**TV • Internet • Phone • The Phone Book**

**Consolidated Communications CTCC Fund (2011)** Consolidated Communications became the Gold Level sponsor of Community Days for three years in a row. Thank you!

**Consolidated Communications CTCC Fund (2009-2010)**

### Legacy Endowments for Cranberry Library:

#### **Bruce and Conni Mazzoni Cranberry Library Fund (2008)**

Bruce and Conni Mazzoni have lived in Cranberry for over 20 years, raising their daughters Allyson and Ashley.

“The Cranberry Library was our first love. We visit weekly with our two daughters to encourage them to read and discover for themselves,” Bruce said. “We have a beautiful library and we are happy to know our endowment fund will help keep it that way,” Conni added. Bruce is a past member of the Library board. Conni and Bruce are currently members of Friends of the Library.

#### **Michelle S. Switala Library Fund (2009)**



Michelle Switala, a voracious reader, gourmet cook, chair of the Pine-Richland mathematics department, doctoral candidate, part-time Pitt faculty member, and gifted amateur musician, was named Pennsylvania’s 2009 Teacher of the Year. Her 2009 endowment is dedicated to funding the Cranberry Public Library. “I love the concept of a public library,” she said. “I set up my endowment to the

Cranberry Public Library as a way to keep our library current, beautiful, and exciting.” Michelle is also a former member and past President of the Library’s Board.

#### **Annabel Turner Library Pillar Fund**

A resident of Cranberry Township and Sherwood Oaks for 22 years, Ms Turner, who passed away in 2004 at age 97, is remembered for a major donation she made to the Children’s Library expansion in 2000. A graduate of Carnegie Institute of Technology, now CMU, Ms. Turner was an avid reader of classics and history. In her will she remembered the Library which, combined with her prior gifts, made Ms. Turner the single largest donor in the library’s history. Through this fund her generosity will be perpetuated and continue to support the Cranberry Library.



#### **The Samuel and Carol Troese Library Fund**

Samuel and Carol Troese moved to Cranberry when it had just over 4,000 residents; both emerged as pillars of their adopted community.

Sam, a health planning professional, wanted to see development come in an orderly fashion, so he joined the Township's planning commission, became a Butler County representative to the Southwestern Pennsylvania Regional Planning Commission, and a member of the Township's zoning hearing board, charged with overseeing design and construction of the Township's new Municipal Center. Carol, who earned a library science degree at Pitt, became a volunteer for Cranberry's startup library and, in 1984, became the facility's librarian. Six years ago, Sam died of cancer at age 61. Four years later, Carol also succumbed to cancer. To honor the couple who did so much for Cranberry Township, their family created an endowment fund in their memory.

#### **Edna T. Walter Fund**

Edna "Tommie" Walter is a resident of Sherwood Oaks and an avid bridge player with a life-long love for libraries. She understands that libraries form an important community asset and supported that belief with a donation of stock that will help to foster great programs and improve the Cranberry Public Library's resources.



#### **The Bill & Jean Heidenreich Library Fund**

Long-time Cranberry residents Bill and Jean Heidenreich both played roles in forming the Cranberry Public Library. Bill served on the library's Board of Trustees during its early years. Jean worked at the library as a clerk for 18 years, until her retirement in 1997. Upon Bill's death in 1982, the family established the Heidenreich Memorial Fund at Cranberry Public Library. It was used to expand the library's collection. Jean later remarried, and when both she and her husband passed away in 2009, the family once again thought of the library and the fund they had created in memory of their parents.

### **Library Memorial Funds**

**Grace Polochak Memorial Fund (2010)**

**Richard Stein Memorial Fund (2010)**



### **Parks & Recreation**

#### **J. Frank Hess Parks & Recreation Heritage Fund (2010)**

Frank Hess – inspirational business leader, aviator, golfer and extraordinary civic volunteer – was a founding member of the Sherwood Oaks retirement community and a great friend of Cranberry Township. He passed away in 2007 at age 93, but his memory continues to motivate those whose lives and careers he touched. His professional life included executive and corporate board positions during Pittsburgh's Steel City era. Outside of work, he held leadership posts in the Ingomar United Methodist Church and the United Methodist Foundation. Hess was a longtime member of the North Hills Rotary, an early promoter of Franklin Park Borough's sewage authority, and board chairman of Passavant Hospital. Honoring his memory, Frank's wife Betty and the Hess family created a permanent endowment which carries his name.

## Why Give? The Impact of Creating a Perpetual Fund

### Step 1: Making the Decision to Leave a Legacy

All of us wonder: Will my life make a difference? How will I be remembered? What can I accomplish to advance my community, my people, my most deeply held convictions?

As college loans morph into mortgage payments and our assets focus on family and retirement needs, those larger questions of life's meaning can become derailed. But when the kids are grown, the mortgage is paid, and we once again listen to our hearts, our priorities shift once again. The Cranberry Legacy Endowment creates an attractive opportunity to make a lasting difference in our community.

Creating a Legacy provides the assurance that your name and contributions will continue to benefit your community, your children, and their children – in perpetuity. A community foundation allows you to invest directly into the fabric of your own community. The Cranberry Legacy Endowment enables anyone to create a fund supporting their choice of more than 40 different causes.

The Cranberry Legacy Endowment is patterned after the successful Centre County Foundation in central Pennsylvania. As Cranberry's 25 year-comprehensive plan was being developed, we looked at other communities to see what they were doing to strengthen their local nonprofits. That's when we discovered the Centre County Community Foundation, in the State College area. Back in 1983, a county judge bequeathed \$10,000 to help local nonprofits. A group of people then joined together to encourage the formation of other endowments, and a foundation was started. That original donation eventually grew to over 300 endowments valued at more than \$20 million today, and the foundation donates more than \$1 million each year to nonprofit organizations.

Approximately 28,000 people make their home in Cranberry Township. But projections indicate that our population will increase to 50,000 by 2030. The average age of Cranberry's residents is now 34. Their lives today benefit from the past contributions of others. But in time, we know that this generation will want to leave their own legacy for others to enjoy and to be remembered for what they accomplished in making our community better.

There are many ways to give. Some strategies can be excellent estate planning techniques, depending on your circumstance. As with all investment and donations, we highly recommend that you consult with your accountant and attorney to decide the best way for you to give.

### Step 2: Naming the Fund

The Cranberry Legacy Endowment can be set up in your name or the name of a loved one. You will then select a nonprofit or specific cause that you have an interest in supporting. For example, "John and Jane Smith Library Fund."

## Step 3: Selecting the Recipients of Your Cranberry Legacy Endowment

- Nonprofit/Civic Organizations
- Scholarships and Awards
- Community Assets
- Other Community Causes



### Nonprofit & Civic Organizations

The primary reason for starting the Cranberry Legacy Endowment (CLE) was to create lifetime funds for the support of local nonprofit and civic organizations. Successful communities are supported by four strong pillars: a sound business base; healthy public institutions; strong faith communities; and robust volunteer nonprofit and civic

organizations. Creating permanent endowments to benefit one or more nonprofit groups in Cranberry Township is the CLE's ultimate goal. Those nonprofit group can count on yearly income from those contributions, but can never touch the principal.

**Why give to the Cranberry Legacy Endowments rather than directly to the Nonprofit group?** Every cent of income generated by CLE's fund investments goes to the nonprofit or civic group of your choice. The CLE board consists of representatives from each of the nonprofit/civic groups for whom an endowment has been created.

Second, nonprofit boards and their paid staffs often experience turnover from year to year. Placing your endowment with CLE provides a level of protection to assure the principal is never touched in hard times or to used to fulfill a one-time need. Your endowment with CLE will last a lifetime and more.

Third, your endowment with CLE will encourage others to follow suit. Since your endowment will be recognized annually in our June Annual Report, you are helping to nurture the idea for others to do the same. Each additional Legacy Endowment helps plant a seed to encourage another family or individual to follow your lead in the future.

Fourth, some nonprofit and civic groups are not 501(c)3 nonprofits in the eyes of the IRS. Utilizing CLE will give you full tax deductions and opportunities per IRS rules and regulations.

Finally, we can offer professional administration and investment expertise that might not be available for an individual investment directly with the nonprofit group.

That's why we encourage you to give to CLE directly in cooperation with the nonprofit or civic organizations you care about. There are other reasons, too. We would be happy to discuss Legacy Endowments and their mechanics with you in full detail to make clear how your gift will be used according to your wishes.

### What nonprofit and Civic groups can I give to?

We recognize all Cranberry Township Community Chest (CTCC) organizations including the Library, Rotary, Lions, Miracle League, The Chamber and dozens more. To see the complete list, go to our website: [www.ctchest.org](http://www.ctchest.org). If a group that you're considering isn't on the list, let's meet to discuss whether it qualifies as a CLE recipient.

## Step 4: There are many ways to give

- Direct Donations
- How \$6,500 can start a \$10,000 Legacy Endowment
- Corporate Matching: How \$3,200 can launch a \$10,000 Legacy Endowment
- Levels of Endowments
- Life insurance gifts
- Real estate/Personal Properties
- Charitable Gift Annuity
- Charitable Remainder Trust
- Wills or Living Trusts

### Direct Donations

The minimum gift to establish a Legacy Endowment is \$10,000. The most popular method is direct donation. Some may think that forming a Legacy Endowment is something for older people, but many community foundations are actually funded by younger adults with the goal of making a meaningful difference in their own communities. They contribute to their endowments on a regular basis to increase the size and effectiveness of their Legacy Endowment. In addition to supporting a specific nonprofit and civic organizations, there are a number of designated and field-of interest funds available to support.

### How \$6,500 can launch a \$10,000 Legacy Endowment

While tax savings are not the reason for philanthropy, the Cranberry Legacy Endowment will allow you to qualify for a tax deduction according to IRS rules and regulations. If you are currently in the 35% tax bracket and claim deductions, your \$10,000 legacy endowment will effectively cost you just \$6,500. This maximizes your contribution in a favorable way for both you and the organization you designate as the beneficiary of your endowment.

### Corporate Matching: How \$3,250 can launch a \$10,000 Legacy Endowment;

Many organizations match employee contributions dollar-for-dollar to certified nonprofit entities meeting IRS regulations. Assuming your company would match a full \$5,000 contribution to start a \$10,000 Legacy Endowment, you would receive a tax deduction for your portion of the \$5,000 donation (assuming 35% tax bracket and you are claiming deductions). Thus, for a net contribution of \$3,250, you can establish a Legacy Endowment for a specific nonprofit organization or cause. You could continue to grow this endowment to new levels using your company match to maximize this benefit.

### Levels of Endowments

There are currently four levels of Legacy Endowments. We recognize each level by name in our Annual Report. The levels are;

- Legacy \$10,000
- Heritage \$25,000
- Pillar \$50,000
- Legend \$100,000

### Life Insurance Gift

Many people are surprised at the idea of funding a Legacy Endowment with life insurance, but it can make a lot of sense. You can donate an existing insurance policy or take out a new one that will be owned by the Cranberry Legacy Endowment to benefit the specific nonprofit/civic group of your choice. It is an excellent way to leverage a \$20,000 donation to generate \$100,000 for an individual, or \$30,000 donation to generate \$250,000 as a couple. These are major donations that will have a tremendous impact on the nonprofit, scholarship or community asset for our community. This is a Planned Investment that can have immediate tax benefits for you while creating a lasting Legacy that you can benefit future generations.

The advantages of life insurance as a gift to fund a Major Legacy Endowment include:

- All insurance premiums are tax deductible in the year they are made.
- Insurance premiums made over \$10,000 will be immediately recognized as a Legacy Endowment in the Annual Report.
- Premiums can be made in convenient annual payments or in a one-time payment.
- Company matches may be used to help pay the premiums.

### Real Estate/Personal Property

From farmland to timberland to vacation residences to rental properties, a gift of real estate can unlock the full value of your property and offer special economic advantages. You can make a substantial gift through a transfer of residential, commercial, or undeveloped real estate. If you own property not subject to a mortgage which has appreciated in value, a charitable gift to Cranberry Legacy Endowments and the nonprofit of your choice may be an attractive proposition.

### Charitable Gift Annuity

An easy and popular way to make a planned gift to Cranberry Legacy Endowment (CLE) is through a charitable gift annuity which provides you with life-time income. When you make a gift of \$25,000 or more to (CLE) to establish a charitable gift annuity, CLE promises to pay you (or up to two people) an income at a fixed annual rate. This rate, based on your age(s), is established at the time of your gift and never changes. Your income from this gift is guaranteed for life.

Upon your death, CLE receives the remainder of the annuity and applies the funds to the program you specified at the time of your gift.

## Step 5: Explain your legacy and why you support your cause.

Before starting an endowment, we encourage you to discuss the matter with your family. We also recommend that you seek professional advice regarding current tax laws and estate planning. As with all information in this brochure and website, no promises or guaranteed returns on investments, trusts or gifts are being made. More details can be found on our website at [www.cranberrylegacyendowment.org](http://www.cranberrylegacyendowment.org).

### Bequest in Will or Living Trust

After providing for family and friends, you may choose to make a bequest in your will or living trust, designating a charitable gift to Cranberry Legacy Endowments after your death to benefit a specific nonprofit/civic organization. A bequest allows you to make a gift to CLE, receive an estate tax deduction for the amount of the gift, and leave a lasting legacy to the aspect of our community which is most important to you.

If you are interested in remembering CLE and a specific nonprofit/civic organization in your will or living trust, please contact CLE about your intentions. A representative will provide you with bequest language that may assist you and your attorney when writing your will or living trust. We will also help you craft a Statement of Intent for your gift, specifying how the gift should be used when received by CLE.

## What can your Legacy Endowment Accomplish? Examples of actual funds\*

### Christopher W. and Karen G. Pelham Fund

Type: Designated  
Established: 1973  
Initial Gift: \$35,361  
Grants Awarded: \$139,672  
Current Balance: \$151,735

### William Harper, Jr. Family Fund

Type: Medical Research  
Established: 1979  
Initial Gift: \$103,584  
Grants Awarded: \$303,792  
Current Balance: \$436,900

### Mark V. Lindsay Scholarship and Aid Fund

Type: Scholarship  
Established: 1981  
Initial Gift: \$59,722  
Grants Awarded: \$166,134  
Current Balance: \$249,121

### Virgil T. Scott's Sons Memorial Fund

Type: Field of interest  
Established 1962  
Initial Gift: \$50,000  
Grants Awarded: \$236,302  
Current Balance: \$273,072

### Professional Administration and Capital Management

Cranberry Legacy Endowment's Board of Directors consists of representatives from nonprofits and civic organizations which receive Endowment funds. There is no paid staff; all promotion is done by volunteers from various nonprofit and civic groups. Expenses for publications such as this annual report are paid by CTCC.

Creating a foundation and administering it can be very expensive. To minimize this expense, Cranberry Legacy Endowment funds are invested and administered by the Pittsburgh Foundation, one of the country's 15 largest community foundations. Since 1945, the Foundation has worked to improve the quality of life in the Pittsburgh region through the more than 1,000 funds it manages. The Foundation handles all the reporting, audits and paperwork required of a philanthropic foundation as well as managing its investments. For investment and reporting purposes, funds created through The Cranberry Legacy Endowment will be aggregated into the parent Foundation's assets and managed as a single fund, the Cranberry Legacy Fund.

### Find out more about creating a Legacy Endowment

More information is available on our website at [www.cranberrylegacyendowment.org](http://www.cranberrylegacyendowment.org). If you are interested in learning how you can create a legacy that will be recognized, remembered, and continue working forever, contact Bruce Mazzoni, 724-776-4806 x1103.

*\* These are actual results of funds under management by The Pittsburgh Foundation. The names of the funds have been changed to safeguard the privacy of their donors.*

# High Impact Business Donors 2010

There are many benefits which grow out of the work of Cranberry's business community. For 2010, one of the most visible was its support for Community Days.



Gold Sponsor: Cranberry Township



Treasure Hunt Sponsor: The Cranberry Eagle



Thursday Sponsor: T J Max



Carnival Sponsor: ATA Martial Arts



Silver Sponsor: Westinghouse Electric



Community Stage Sponsor: Moe's Southwest Grill



Carnival Sponsor: UPMC Passavant Cranberry



Friday Sponsor: PNC Financial

## MAJOR DONORS

**Armstrong** - Trackless Train

**BHS WholeHealth** - Petting Zoo

**Cannon USA** - Cash Donor

**Insight LASIK & Refractive Group** -Gymagic Bus

**Northland Ford, Lincoln & Mercury** - Car Cruise & Thursday Night Concert

**SpeedPro Imaging** - Nonprofit Midway Banners

**Waste Management / Collection Connection** - Recycled Art Contest

## IMPORTANT DONORS

**Bed Bath & Beyond** - \$20 Gift Card  
**The BodyBar Experience** - Scavenger Hunt  
**Castle Cheese** - Donation  
**Champagne Appraisal Services** -  
Nonprofit Booth Sponsor  
**Chick-fil-A** - Food for Volunteers  
**Coventry** - Parking Space  
**Cranberry Business Park** - Parking Spaces  
**The Cranberry Eagle** - Donation  
**Cranberry Highlands Golf Course** - Prizes  
**Delphi Security Services** - Security  
**DFK Dentistry** - Treasure Hunt Key 2 & Scavenger Hunt  
**Dick Donnelly** - Shuttle Sponsor  
**District Judge Dave Kovach** - Face Painter  
**Edward Robison DDS** - Nonprofit Booth Sponsor  
**Fidelity Bank** - Scavenger Hunt  
**Fogle & Associates** - Feed the Community  
**Freedom Square Diner** - Treasure Hunt Key 3 &  
\$300 in Gift Cards  
**Giant Eagle** - Seven Fields - Nonprofit Sponsor  
**Good Shepherd Vet Hospital** - Prizes  
**Hillman Appliance** - Scavenger Hunt  
**Hitchan Oral Surgery** - Balloon Man  
**Home Depot** - Many Supplies  
**Honda North** - Sponsor of Boy Scout Event  
**House of Chen** - Five \$20 Gift Certificates  
**Hyatt Place** - Free Overnight Stay  
**Jerry's Car Wash** - Gift Certificates  
**Kenny Ross Chevrolet** -  
Scavenger Hunt Sponsor  
**Kings Jewelry** - \$70 in Gift Cards  
**Kuhn's** - \$20 Gift Cards  
**Manheim Auto Auction** - Donation  
**Med Express** - Co-Sponsor of Spangles the Clown  
**Metropolitan ENT & Associates** - Scavenger Hunt Sponsor & Gift  
**New Dimension Comics** - Prizes  
**Save on Beer** - Snowboard & Gifts  
**SiBA** - Donated Lunch  
**Sciullo Insurance & Financial Services**  
**Simpson & McCrady** - Prize  
**Stone Pepper Grill** - Nonprofit Sponsor  
**Streets of Cranberry** - Treasure Hunt Key 1 &  
\$1,000 in Gift Cards  
**Teknic Colour Salon** - Scavenger Hunt  
**ThyssenKrupp Materials** - Parking Space  
**Treasure Hunt** - One Gold & Seven Silver Coins  
**Unique Ventures, Perkins** - Donor  
**WWD Mechanical** - Prizes  
**Yinzers North of the Burg** - Nonprofit Sponsor & Gifts

## Individual Donors made an Impact in 2010.

Individual support is our most important method of raising funds to do what we do. CTCC is a 501(c)3 nonprofit organization and your contributions are deductible, per IRS laws. We are staffed by volunteers and 100% of every donation is invested back into our community. Thank you!

<b>Andree, Jan &amp; Jerry</b>	<b>Lahm, Jeanette &amp; Eric</b>
<b>Battaglia, James P., Jr.</b>	<b>Lang, Arla Mae</b>
<b>Beatty, Vicki &amp; Ed</b>	<b>Laslavic, Mary Lou</b>
<b>Boren, Judi &amp; Bob</b>	<b>Laughlin, Ricky</b>
<b>Bowers, Nancy C.</b>	<b>Lopresti, Julia &amp; James</b>
<b>Brannon, Maxine</b>	<b>Mager, Jennifer &amp; Chris</b>
<b>Burr, Jennifer</b>	<b>Magill, Bev &amp; Richard</b>
<b>Cameron, Sherry &amp; Clyde</b>	<b>Mazzoni, Allyson</b>
<b>Cherry, H. D.</b>	<b>Mazzoni, Conni &amp; Bruce</b>
<b>Cowan, Lorraine</b>	<b>McCoy, Marion &amp; Robert</b>
<b>Croll, Arthur</b>	<b>Meltzer, Richard</b>
<b>Cully, Patricia &amp; Tom</b>	<b>Mohlman, Beth Ann</b>
<b>Del Bene, Richard G.</b>	<b>Moran, Gretchen &amp; Jim</b>
<b>Dewald, Helen &amp; Ray</b>	<b>O'Brien, Pat &amp; George</b>
<b>Diehl, P. Michael</b>	<b>Pawlowski, Ellen &amp; Richard</b>
<b>Donnell, Sara &amp; James</b>	<b>Pearce, Terry &amp; Bob</b>
<b>Ducharme-Ward, Danielle</b>	<b>Peebles, Agnes</b>
<b>Drew, David A.</b>	<b>Petrone, Frank</b>
<b>Egan, Marilyn &amp; Robert</b>	<b>Pindroh, Melissa &amp; Gerard</b>
<b>Ferry, Robert L.</b>	<b>Rinehart, Katherine &amp; William</b>
<b>Firster, Meghan</b>	<b>Sarver, Lorraine &amp; Ed</b>
<b>Ford, Mr. &amp; Mrs. Charles</b>	<b>Schartner, Kathleen &amp; Al</b>
<b>Franks, Janis &amp; Thomas</b>	<b>Schollenbarger, Jack</b>
<b>Garrison, Diane &amp; Walt</b>	<b>Skubak, Michele &amp; Jim</b>
<b>Garrity, Patti &amp; Matt</b>	<b>Storrs, Cheryl &amp; Daniel</b>
<b>Gasperini, Judy &amp; Tom</b>	<b>Switala, Michelle</b>
<b>Graf, Dolores I.</b>	<b>Tamilia, Marie E.</b>
<b>Greigger, Paul D.</b>	<b>Treese, Jean &amp; Armel</b>
<b>Guffy, Michael</b>	<b>Uthman, Kathryn M.</b>
<b>Heasley, Christine Ann</b>	<b>Volle, Carol</b>
<b>Heery, Linda &amp; Brian</b>	<b>Vorpe, Russell</b>
<b>Herbst, Karen</b>	<b>Wagner, Roy E. III</b>
<b>Hess, Betty K.</b>	<b>Wagstaff, Brian G.</b>
<b>Hogan, Barbara &amp; Edward</b>	<b>Washburn, Edith</b>
<b>Holt, Geralynn &amp; Tim</b>	<b>Weber, David W.</b>
<b>Isler, Rebecca</b>	<b>In Memory of John McClymonds (from Bruce Mazzoni)</b>
<b>Johnston, Janice</b>	
<b>Kimbro, Mrs. Henry C.</b>	
<b>Kotsenas, Paul</b>	
<b>Kovach, Patricia &amp; David</b>	

# Faith Communities

**Dutilh Methodist Church**, which traces its origins back to 1844, merged with a sister church in Mars last year to extend its resources and reach of its ministry. Its Cranberry Campus is the host site for the annual October Pumpkins for People, a fundraiser to help individuals and families in need. However, Dutilh congregants are also offered a wide range of community service opportunities in cooperation with affiliated organizations, schools and churches throughout the region that include building construction and maintenance projects, emergency relief, tutoring, food pantry, care visitations, reading programs, crisis shelter and homeless services.

**Fountain Park Presbyterian Church** is a small family-oriented church whose members assist others in their faith journey. That includes leading worship at Sherwood Oaks Retirement Community, assisting in cleanup days along Dutihl Road, serving at the Lighthouse Food Bank, and preparing meals for the Hot Metal Bridge Faith Community on Pittsburgh's South Side. In November, the church held a "Concert of Hope" to benefit a local family and the Alliance Against Drugs. And in partnership with two other local churches, it participated in the Cranberry Chamber Business Expo, A Taste of Cranberry, Cranberry Community Days and Cranberry Welcome International Neighbors. The church provides space for local Daisy, Brownie and Girl Scout groups as well as for AA and Al-anon. At Christmas, members show their gratitude to Cranberry's Police and Fire Departments by delivering cookies from the entire congregation.

**Victory Family Church** considers its entire home community to be family. At weekly addiction recovery outreach meetings featuring discussion groups, a meal, food donations, clothing donations and free child care, anyone suffering from personal or family struggles finds love and support. Its young adults will be aiding Glade Run's residential location in Zelienople this year with redecoration and renovation. In addition, Victory Church has provided residents of Glade Run with Christmas gifts for many years. The church funded an in-service meal for Seneca Valley teachers and makes monthly contributions to five food banks within the Cranberry area. The staff and congregation of Victory Church strive to be a resource to the community – providing help and hope to families and individuals through its assortment of outreach efforts.

**Grace Community Church**, a fast-growing congregation which is currently building a large new facility along Marshall Road, is committed to serving the Cranberry Township community throughout the year by assisting local residents as well as various municipal departments. In 2010, members of the church gave over 7,500 hours of local service.

They included Adopt-a-Highway, Community Days, replacing roofing on park baseball dugouts, Gleaner's Food Bank, VOICe, cleaning out park flower beds, home improvements for numerous residents, cleaning debris from streams, blood drives, free Laundromat services, nursing homes visits, collecting supplies for pregnancy centers, coats for the homeless, volunteers for the Puppy Plunge, tree planting at the Dog Park, and assisting World Vision International with organization of donations and supplies for shipment. On Halloween weekend, Grace Kids Ministry joined with Chick-fil-A to offer a communitywide Halloween party. Over 1,200 parents and children attending the event.

**Discovery Christian Church** participated in many community activities last year. It convened two anti-bullying assemblies at Haine Elementary School, served with Cranberry CUP's softball and golf tournaments, and helped provide volunteers for its concession stand. It also helped CTCC manage parking during 2010 Community Days. Discovery Christian Church is happy to be a part of such an amazing community and continues looking for ways of giving back.



# Nonprofit Organizations that Help Make a Difference in Cranberry Township:



## Cranberry Township Volunteer Fire Company

The Cranberry Township Volunteer Fire Company was formed in 1959 by a handful of dedicated residents using a 30-year old pumper. Today, it is a highly-trained and well-equipped first response organization supported by a dedicated real estate tax with more than 50 active firefighters. But it remains an all-volunteer organization dedicated to delivering its educational, life-saving, and property-protecting services to local residents, businesses, and neighboring communities whenever needed.

Recruitment of new members is an ongoing activity of the Fire Company. Membership is open to anyone in the Cranberry Township area. As with volunteer fire companies everywhere, minimum requirements have been established by its membership committee to maintain active status. They include attendance at monthly business meetings, participating in scheduled training, and Tuesday evening work nights. In addition to active firefighters, the Fire Company includes a Ladies Auxiliary, a Junior Firefighter organization, and other company memberships not directly involved in fighting fires.

Beyond responding to 911 emergency calls for structure fires and vehicle rescues, members of the Fire Company are also active in fire safety education, in training local business employees in the use of fire extinguishers, with Career days, with Community Days, and more.

Contact any active firefighter or attend a Tuesday evening membership meeting at the Haine School Fire Station to learn about membership. More information is available by writing to: [webmaster@ctvfc21.org](mailto:webmaster@ctvfc21.org) or calling 724-776-1196.



## Rotary

Cranberry's two Rotary Clubs, with meetings at sunrise and noontime respectively, uphold the organization's century-old tradition of thinking globally, acting locally, and providing service at both the home community and international levels.

As the oldest service organization of its type and, with more than a million members, one of the world's largest, Rotary members undertake a wide range of projects including those addressing health-care, hunger, illiteracy, environmental, and community welfare needs in keeping with its mission of 'service above self.'

The twin Rotary organizations – which share a common mission – have been responsible for a number of high-value community assets and humanitarian programs in Cranberry. They include:

Cranberry Rotary Amphitheater; Cranberry Dog Park; Senior Citizens Luncheons and Tours of Cranberry; Seneca Valley Student Scholarship Program; Community Day Bar-B-Que; Rotary Flower Gardens; Rotary Shelter, a food drive for the Gleaners' Food Bank, and many more. Volunteer opportunities currently available include, in addition to the above,

assistance with the annual golf outing, the Halloween day Zombie 5K race, career exploratory day at Haine Middle School, and project publicity.

Cranberry Rotary, with 30 members, meets every Tuesday at Noon at the Rose E. Schneider YMCA. The Cranberry Sunrise Rotary, which also has 30 members, meets Fridays at the Marriott on Cranberry Woods Drive at 7:30 AM. There is a one-time application fee of \$35 and annual membership dues of \$125.

To join Cranberry Noon Rotary, simply attend a meeting or go to their website at [www.cranberryrotary.com](http://www.cranberryrotary.com). For membership in the Sunrise Rotary, see their website, [www.cranberrytwpsunriserotary.org](http://www.cranberrytwpsunriserotary.org), or attend a club meeting.



## The Lions

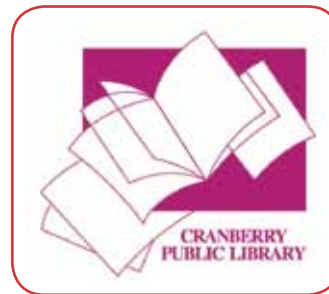
True to their motto 'We serve,' Lions Clubs stand ready to help wherever needed, in Cranberry and around the world. With 45,000 clubs and more than 1.3 million members, the Lions is the world's largest service club

organization. It is also one of the most effective.

The Cranberry Township Area Lions Club is committed to community service and eliminating preventable blindness. Its primary goal is to support sight programs and services including vision screenings, eyeglass recycling, guide dog training and eye care to those in need. The club's men and women hold various fundraisers throughout the year, and give all proceeds back to the community and people in need.

The Cranberry Township Area Lions Club, as the local chapter is officially known, welcomes donations of eyeglasses at any time. The organization has also made a number of valuable contributions to the Township including financing the construction of a park shelter, donating drinking fountains to local parks, providing seating for Miracle Field in Graham Park, building a wetland nature trail in North Boundary Park, providing disaster relief, and more.

Cranberry's Lions Club members hold twice a month dinner meetings at the Rt. 19 North Park Lounge from September through June, although attendance is at the discretion of each individual member. Dues are \$80 a year after a one-time initiation fee of \$30. Anyone interested in learning more about the organization and membership can contact Tim Roscoe at 724-538-1008 or at [rosco@zbzoom.net](mailto:rosco@zbzoom.net).



## Cranberry Public Library

Cranberry's Public Library has steadily grown in its patronage, its holdings, and its value to local residents from the time it was started in 1973 with just 200 books in a tiny, 120 square foot space.

Today the library has over 95,000 items in its collection, more than 26,000 registered patrons, and 15,300 square feet in the Municipal Center with an annual circulation of over 350,000 items.

# Nonprofit Organizations that Help Make a Difference in Cranberry Township:

The library receives budget support from the Township through a dedicated, 1 mil property tax, in addition to state support, which declined sharply this year. Funding from Butler County has remained unchanged for more than a decade. Even so, most library services remain free of charge to patrons, and the library is always looking for volunteers. Volunteers work a variety of assignments including circulation desk, shelving items, help with public computers, and much more.

Individuals 14 and older who volunteer for library duties work side-by-side with professional staff in nearly every library activity. During an orientation process, volunteers will learn about the specific opportunities available at that time. A handbook for volunteers, "Lend a Hand," is available on the website at [www.cranberrytownship.org/library](http://www.cranberrytownship.org/library). Or call Pat DiFiore at 724-776-9100 to find out how to become a library volunteer.



### The Chamber of Commerce

At the beginning of 2010, The Cranberry Area Chamber of Commerce merged with its North Allegheny counterpart. The combined organization now includes approximately

1,100 member businesses based in Cranberry Township, the North Hills, and beyond.

Through its various committees, The Chamber advocates on behalf of the local business community, addressing issues of legislative and economic development, as well as special events, marketing, community outreach, programming, and other topics of importance to its members. In addition to providing various programs and services for its members, The Chamber offers a variety of business and social networking events, a Trade Show, Golf Outing, Food & Wine Classic, the Chamber 5k Chase, A Taste of Cranberry, a Holiday Benefit Dinner and more.

The Chamber is fully funded by its members whose annual dues, which range from \$250 to \$750 a year, are used to address the needs of its membership, new business arrivals, the community, and new residents who have selected Cranberry as their home. Business sponsorship opportunities are also available for all events and programs. However, volunteer assignments for both students and adults are also offered in signature event operations, community outreach efforts, and office support. For membership information, call 724-776-4949 or go to the website, [www.thechamberinc.com](http://www.thechamberinc.com).



### Cranberry Township Athletic Association, CTAA

CTAA, the Cranberry Township Athletic Association, is responsible for organizing and scheduling every type of youth baseball and softball for league play in Cranberry. It is a huge undertaking – one that

currently serves 1,700 members. Its objective is to implant the ideals of sportsmanship, honesty, loyalty, courage, and respect in its young players to help them become stronger, happier children who grow into healthy adults.

CTAA has been an important partner of the Township government in developing playing fields in Cranberry's public parks and shares in the responsibility for their maintenance.

Adult volunteers form the backbone of CTAA and are welcome in every capacity including as umpires, managers, coaches, concession stand operators, and field maintenance workers. Meetings are held monthly except for July, and no membership fees apply to adults. To learn more about the organization and its volunteer opportunities, contact president Anthony Storti at: [ctaa-president@ctaaonline.com](mailto:ctaa-president@ctaaonline.com) or go to its website, [www.ctaaonline.com](http://www.ctaaonline.com).



### Seneca Valley Junior Football Association of Cranberry Township

The Seneca Valley Junior Football Association of Cranberry Township, SVJ-FACT, is an organization through which children of Cranberry and Seven Fields can participate in tackle

football and cheerleading programs from July through mid-November. More than 500 children take part in the volunteer organization's programs. The organization also raises funds which were used to build many of the features in the Graham Park football campus and to purchase protective gear and dress uniforms for the children in its programs.

SVJFACT's football program includes four age groups with coaches to assist each team. While many organizations play only their best athletes, SVJFACT has minimum play rules for every player that vary with each age group. Registration for the season opens in March, but additional registration can occur through the first week of August. Registration fee for football is \$150 per child; \$110 for the cheer program.

Members must have a child enrolled in either the 6 to 12-year-olds football program or on the cheer program for children in grades 1 through 8. Adult volunteers are the mainstay of SVJFACT working as coaches, fund raisers, concession workers, and field maintenance personnel. Members and non-members alike are eligible to volunteer in all of these roles. Members, who meet monthly in the evening, can also volunteer as team moms, team dads, and as concession managers.

For more information, visit the association's website at [www.svjfootball.org](http://www.svjfootball.org) or contact them at [gmk@zoominternet.net](mailto:gmk@zoominternet.net).



### Miracle League of Southwestern PA

Miracle League – a national organization focused on building ballfields designed to accommodate children and adults with disabilities – was formed during the late-'90s in Georgia. Cranberry resident Mike Sherry, who

learned about the organization while working there, became a leading proponent for building a Miracle Field in Graham Park and was instrumental in securing support for it from other local benefactors.

Now in its third year of play as part of CTAA, Miracle League of Southwestern Pennsylvania welcomes on- and off-field community volunteers starting as young as 14 years of age as player buddies, coaches, managers, umpires, scoreboard operators, announcers, fund-raisers, and more. Games are played in two seasons – May through June and August through September – on Tuesday and Thursday evenings as well as all day on Saturdays. Each day of play corresponds to a separate age-related league: Miracle League, Youth Competitive League, and Adult League. To learn more, visit the website at: [www.mlsdpa.org](http://www.mlsdpa.org).

The success of the Miracle League organization in Cranberry is wholly dependent on caring and passionate local volunteers. Their participation is changing the lives of children and adults with special needs – as well as those of the volunteers themselves – every day.



### **Cranberry CUP**

In 2000, as an officer of her neighborhood homeowners association, Cathy Cortazzo suggested what has since grown to be the premier fund-raising and community-building activity in Cranberry. As word of the slo-pitch adult softball games spread,

residents from other housing throughout in the Township asked to participate as well, and it soon grew into a playoff series.

That was the genesis of the Cranberry CUP Tournament, now a fully accredited 501(c)3 charitable organization and a magnet for weekend summer warriors from neighborhoods and businesses throughout Cranberry Township and nearby Seven Fields. Since its inception in twelve years ago, the Tournament has expanded to include a golf outing, two softball divisions, three days of competition, more than 40 teams, and has raised more than \$750,000 to benefit local families in need – families whose struggles have become a source of inspiration to their neighbors as well as complete strangers. During the past few years, its mission has expanded to include other events and charitable activities as well. This year's softball tournament will take place August 5, 6 and 7.

Residents can participate in any of the events, become sponsors, make tax-deductible contributions, or volunteer their time. In-kind contributions of skill are always welcome; they include planning, designing market materials, helping staff the concession stand, maintain the fields, help at the kick-off party, or assisting with the golf outing.

For more information, contact Cranberry CUP at P.O. Box 1614, Cranberry Township, PA 16066, at [softball@zoominternet.net](mailto:softball@zoominternet.net), or at their website, [www.cranberrycup.org](http://www.cranberrycup.org)



### **Friends of the Cranberry Public Library:**

The use of Cranberry's Public Library has continued to grow throughout the Internet era. Last year alone, the Library had a record 193,000 visits – many of them to use

the dozen Internet stations and free wireless services it offers. Although the library is partly supported by a dedicated local property tax, augmented by modest state and county funds, additional help from library patrons and others who understand the value that a good public library brings to its community remains a fundamental pillar of the Library's support. In fact, with recent cutbacks in state support, that private help is more important than ever.

The Friends of the Cranberry Public Library is comprised of individuals who share the goal of enhancing the library's collections and services. Their mission is to promote the continued growth, expanded use, and sustained excellence of the library through fundraising and by providing volunteer services to Library programs. Examples include summer reading programs, book sales, help with special programs, raising funds for the purchase of e-audio books, and helping to staff Community Days events. The group meets two or three times a year, and a sliding scale of annual membership fees starting at \$5 finances its operations.

More information is available at [www.cranberrytownship.org/library](http://www.cranberrytownship.org/library), and new members are always welcome. Call 724-776-9100, or e-mail: [friendsofcpl@gmail.com](mailto:friendsofcpl@gmail.com) about joining.



### **Cranberry Township Historical Society**

Cranberry Township was incorporated more than 200 years ago, in 1804, after centuries as a site for hunting and trading by Native Americans. But from the early 19th century until about 50 years ago, it was

a primarily agricultural community without a formal town center. Most of the area's recorded history at that time centered around settlements in Butler and Allegheny counties, outside of Cranberry.

The Cranberry Township Historical Society was founded in 1988. Its mission was to identify, preserve, and promote public awareness of historical sites, landmarks, place names and traditions in Cranberry itself. Through research, publications, quarterly presentations, and the placement of historical markers, the Society has continued to raise awareness of the Township's roots and instill an appreciation of its evolution into the dynamic community Cranberry has become today.

The Historical Society offers free programs to the public and provides docents for tours of the fully-restored one-room Sample Schoolhouse, which had been used in Cranberry as a school building until 1951. The Schoolhouse has since been relocated to the front of the Municipal Center and currently houses a display of Native American artifacts recovered from various sites in the Township.

New members are always welcome and donations are always appreciated. Membership meetings are held quarterly, usually in the Municipal Center. For more information, contact president Roy Wagner at 724-612-5730 or by email at [rewagner@zoominternet.net](mailto:rewagner@zoominternet.net). Membership application forms and schedule of dues are available at the Society's website, [www.explorecranberry.org](http://www.explorecranberry.org).

# Nonprofit Organizations that Help Make a Difference in Cranberry Township:



## **Cranberry Women's Club**

The goal of the Cranberry Women's Club is to develop the intellectual and social interests of its members while promoting civic and philanthropic projects within the community. Its 50 members meet at 7:00 PM on the second Thursday each

month in the Library meeting room of the Cranberry Township Municipal Center to plan projects and events for the coming year. They normally include several fundraisers: the Farkleberry Craft Show, the Christmas House tour, a Spring Tea, and a number of special projects.

Proceeds from the organization's main fundraisers are donated to various local charities and nonprofits including Habitat for Humanity, Susan G. Komen Breast Cancer Foundation, Cranberry Historical Society, Cranberry Library, Cranberry Parks and Recreation, and Gleaner's Food Bank.

Other activities include Book Club meetings, monthly Meet for Dinners, and special projects for Cranberry. Membership dues are just \$20 for the year, September through May.

Information about membership and volunteering is available by attending a meeting, asking any club member, or by contacting club president Joyce Duffy at 724-776-3806 or by e-mail at [joyceduffy@zoominternet.net](mailto:joyceduffy@zoominternet.net).



## **Gleaner's Food Bank**

Hunger has been a serious problem in America for many years, even in Cranberry Township, where it is hard to spot. Today more than 37 million Americans – including 14 million children – struggle with hunger. And in difficult economic times,

that number grew dramatically, while donations declined.

Gleaner's Food Bank is a non-denominational organization serving Cranberry Township residents who meet Butler County's income guidelines for food assistance. Gleaner's food bank gladly accepts and always needs donations of non-perishable food items as well as monetary donations.

At different times of year, local organizations and student groups have organized food drives to replenish the food bank's cupboard, which is located in an annex building at St. Ferdinand's Church. Adult volunteers fill the bags and then help with the monthly food distributions. Teen volunteers meet once a week in the evening to sort and shelve food as needed. And individual donations of food or money are always greatly appreciated.

If you would like to donate food or money, or if your place of business is interested in becoming a drop-off location, call 724 776-2888 for more information.



## **American Heart Association**

Heart disease and stroke are leading causes of death in the United States as well as a major cause of disability. The American Heart Association – a national voluntary health agency – has taken on the mission of raising funds for the

discovery and improvement of procedures, devices, and medicines related to cardiovascular diseases and stroke. It goes about it in a variety of ways including research, education, professional support, emergency training, patient care guidelines, healthy lifestyle advocacy, and fund-raising on behalf of all its programs. Many of those programs have local units, including Cranberry Township.

Here, volunteers help to promote the value of physical activity to elementary, middle and high school children through programs such as Jump Rope for Heart and Hoops for Heart. Other programs raise funds through events including the Heart Walk, Heart Ball, Bean Bag Tournament, and others. High school seniors seeking projects that promote the Association's mission are also welcome.

Anyone interested in advancing the work of the Association can contact Barbara Roth, Division Director for Butler & Beaver counties at: 724-453-1004 or by email at: [Barbara.roth@heart.org](mailto:Barbara.roth@heart.org).



## **United Way of Butler County**

For more than 75 years, United Way of Butler County has been an integral part of its community, mobilizing people and resources to advance the common good in a period of profound change. During that period, its own name changed

several times from the Community Chest to the War Chest to the United Fund to United Way.

Community issues have also changed, from wartime and post-war needs, to unemployment, to a drug and alcohol abuse, to national disasters, and to rising costs that affect basic needs. The agency's greatest asset is its ability to bring together business, non-profits, government, education and others to solve community problems using a variety of resources, including money. CTCC is an affiliate of United Way.

Volunteers are always welcome. If you are interested in learning more about opportunities to support a United Way volunteer project, visit its website at [www.butlerunitedway.org](http://www.butlerunitedway.org) or contact Executive Director Leslie A. Osche at 724-285-4883.



### **Girl Scouts of Western Pennsylvania**

Since its founding in 1912, Girl Scouts has offered remarkable opportunities for girls to develop positive values and to contribute to society as leaders, thinkers, and responsible citizens. Today, the Girl

Scouts remains a highly regarded, contemporary organization and a steadfast advocate for girls.

As a member, girls can participate in different pathways including the troop, camp, travel, event, or series pathways. But whatever path they follow, together with committed adult volunteers who partner with girls to guide and inspire their growth and achievement, the Girl Scout organization builds girls of confidence, courage and character who make our community a better place.

Volunteers in a position to offer a significant amount of time may be interested in becoming Girl Scout Leaders; those looking for intermittent opportunities may be interested in working with program teams or with our camp staff. The organization will work with adults to find the right fit for a rewarding experience.

Anyone interested in becoming a member or volunteer, can visit the Girl Scout website at [www.gswpa.org](http://www.gswpa.org), or call 1-800-248-3355.



### **Boy Scouts of America**

Nationally, the Boy Scouts of America includes over five million members. Its mission is to prepare young people to make ethical choices by instilling in them the values of the Scout Oath and Law. The organization provides a series of pro-

grams for young people that builds character, trains them in the responsibilities of participating citizenship, and develops personal fitness.

Age-related divisions, starting with Cub Scouts, are available for boys as young as seven. Typical projects include collections for food banks, for donated items to send to soldiers, and roadside cleanups. The achievement of Eagle Scout rank confers a lifelong status shared by leaders in many arts and professions. In Cranberry, Eagle Scouts have built benches, pathways, bridges, picnic tables, birdhouses, installed planting beds and, repaired campgrounds.

The Boy Scouts relies on millions of volunteers to create opportunities for its young people to learn and grow. Among those volunteer roles: Scout Leader, administrator, badge counselor, event committee staff, donor, and assistant with special events such as field trips. Background checks and youth protection training are required for certain positions in this category.

Boy Scout Troops 403 and 404 as well as Cub Scout Packs 403 and 406 in Cranberry operate under the authority of the Moraine Trails Council. Each unit meets according to a schedule of their own choosing. For more information, call the Council's office at 724-287-6791 or go to their website: [www.morainetrails.org](http://www.morainetrails.org).



### **Big Brothers Big Sisters of Butler County**

Big Brothers Big Sisters is America's oldest, largest and most effective youth mentoring organization. Its adult volunteers help children ages 6 through 18 enrolled in the program by providing positive role models in one-to-one relationships.

Here, the program is part of the Butler County Family YMCA. Since 1995, it has made more than 300 matches with children throughout Butler County. And, according to program outcome evaluations, improvements in the children's outlook, interest, and self-confidence are dramatically higher as a result of the experience.

Adult volunteers are screened, provided initial training, and asked to make a one-year commitment to spend 10 to 12 hours a month with the child. Matches meet on their own time for a variety of pursuits such as going to movies, to the Y, or to cultural events with overall supervision from a BB/BS case manager. The program also offers monthly activities for all participating children, volunteers and families.

Find out more by going to the YMCA's website, [www.bcfymca.org](http://www.bcfymca.org) and clicking on the Big Brothers Big Sisters link or by calling program director Corinne Coulson at 724-287-4733.

### **UPMC Passavant Cranberry**

#### **UPMC Passavant**

Building on its foundation as a well-respected and deeply-rooted community hospital, UPMC Passavant has been transformed in

recent years into an advanced care center, providing highly specialized medical and surgical treatment by expertly trained and renowned physicians.

In addition to its professional staff, the Passavant's operations include approximately 50 volunteers who provide a variety of support services to patients and their families. Among them: visiting patients, running activities, calling bingo, building bookshelves, and more. Prospective volunteers are given health and background checks, interviews, and an orientation prior to undertaking projects at the hospital.

For more information about volunteer opportunities with UPMC Passavant, contact Christa Magness or Marla Ott at 724-772-5382.



#### **Lifesteps, Inc.**

Children and adults with special needs, including autism and learning disabilities, have been the focus of Lifesteps since its founding, nearly 90 years

ago as the National Society for Crippled Children. Today, with over 600 employees, Lifesteps operates programs in more than 59 locations throughout Southwestern Pennsylvania.

# Nonprofit Organizations that Help Make a Difference in Cranberry Township:

However volunteers 16 and older remain the heart of Lifesteps. Their contributions of time and talent involve program areas, fund raising, and community relations efforts. Adults and students, as well as clubs, organizations and businesses, all provide volunteer services to further the organization's mission of helping individuals and families with special needs.

A variety of volunteer opportunities are available at Lifesteps which include working with children and those with disabilities; working with the elderly, helping out with special events and fundraisers, general office work, even spring and fall grounds keeping.

Lifesteps' Family Caring Fund supports programs like the Butler Geriatric Adult Day Health Services, which helps medically fragile adults live to their fullest potential, and free Child Check screenings that help identify problems that may interfere in the normal growth and development of children from birth to five years of age. The primary purpose of the Lifesteps' Family Caring Fund is to pay costs not otherwise reimbursed by federal, state or county programs.

To learn more about volunteer opportunities, contact the Lifesteps Community Relations department at 724-283-1010 or go to its website at [www.lifesteps.net](http://www.lifesteps.net).



### Cranberry Senior Center

The Cranberry Senior Center in the Township Municipal Center is open year-round. It is operated by the Lutheran Services Society and the Butler County Area Agency on Aging, and it serves free lunches Monday through Friday to Butler County residents age

60 or older. Activities are also planned for each day.

Volunteers are always welcome to help with duties such as preparing and serving meals, tidying up at closing time, teaching a class, or leading a workshop. One-time and ongoing volunteer opportunities are available, and groups are welcome!

To learn more about volunteer openings at the Center, or for a schedule of activities, contact the Cranberry Senior Center Manager, Terrie Walker at 724-772-6086, between 10:00 AM and 2:00 PM.



### Helping Paws, Inc.

There are more than 77 million dogs and 93 million cats owned by American households, according to the Humane Society of the United States. Yet millions of others are abandoned every year. And most current animal shelters are under

stress to meet the growing demand for their services.

Helping Paws is a small group of volunteers involved in raising funds to support animal rescue efforts in our own area, finding permanent homes for homeless animals, educating the public on responsible pet ownership, and promoting spay and neuter programs. It has assisted in local dog and cat rescues,

raised money for animal medical and food expenses, and helped in emergency situations. In-kind and monetary donations are always welcome.

The organization's fundraising activities include making animal-related crafts, gifts and treats and then selling them at special events in high-traffic areas, often accompanied by an animal rescue agency and educational material. Its members in Cranberry meet several times a year as required by the projects on the group's agenda. Volunteers interested in supporting the organization's work are invited to contact Mary Ann Engles at 724-272-7238 and to fill out a volunteer application, which is available at the website: [www.helpingpawsinc.com](http://www.helpingpawsinc.com).



### The American Respiratory Alliance of Western Pennsylvania

From its start in 1900 as the Pittsburgh Sanatorium, and later as the Tuberculosis League of Pittsburgh, The American Respiratory Alliance of Western Pennsylvania has been

providing services to local communities for more than a century. Tuberculosis was once the leading cause of death in America, but the bacteria causing the disease have now been largely eradicated and the Alliance has evolved to offer programs for adults with chronic lung diseases, children with asthma and their parents, adults and adolescents who would like to quit smoking, health professionals who require the most current information on tuberculosis, influenza, and other lung diseases, as well as anyone wishing to learn more about their lungs and how to keep them healthy.

Programs targeting asthma, chronic bronchitis, emphysema as well as smoking cessation are conducted annually throughout the community and include free educational programs in the school systems and at a special asthma camp, most of which are provided either for free or for a minimal fee. As a result, the need for building a strong fundraising base is critical to its continued operation. Volunteers available on an 'as needed' basis are welcome to help with general office work at its 201 Smith Drive location in Cranberry.

The Alliance's biggest event is its September 1 'Savor Pittsburgh' culinary competition; volunteers interested in helping to staff the event should call Merritt Spier at 724-772-1750. More information about the Alliance is available at its website, [www.healthylungs.org](http://www.healthylungs.org).



### The Elks

The Cranberry Elks Lodge 2249 is part of the million-member network of The Benevolent and Protective Order of Elks of the United States of America. With more than 2,000 lodges across the country, the Elks is one of the largest and

most active fraternal organizations in the world. Its primary local mission of is to contribute to the well-being of the

Cranberry Township community. It is a private club, but any U.S. citizen is eligible to join if nominated by a current member. The Lodge holds open houses once a month for nonmembers to come in, discover its Grill Room, and talk with active members.

Lodge 2249 currently sponsors a range of state and local activities including basketball and soccer shooting competitions, and Americanism Essay Contest, a Drug Awareness Poster Contest, various services for veterans and active service members, Christmas presents and Mother's Day Gift Cards for a local Women's Shelter, donations to Gleaners Food Bank, and through contributions to the Elks National Foundation which provides for Scholarship Programs, a National Veterans Service Program, and Community Investment Programs.

Dues are \$75 a year, which entitles the member to Lodge access at any time during business hours and to visit any other Elks Lodge in the United States. The Lodge holds meetings every 2nd and 4th Wednesday evening at 7:30 PM. Members enjoy competitive prices on food and entertainment is provided on a regular basis, along with Bingo on Saturday evenings at 7:00 PM. To learn more about the Lodge, please access its website at [www.cranberryelks2249.com](http://www.cranberryelks2249.com).



#### Highmark Caring Place

The Highmark Caring Place offers a resource for grieving children by creating awareness of their needs, providing programs for them and their families, and by empowering the community to effectively support them.

The first Caring Place

facility opened in Pittsburgh in 1997. Since that time, the program has expanded across Pennsylvania, with additional facilities in Erie, near Harrisburg, and just south of Cranberry, in Warrendale.

Thousands of community members are helped by the Caring Place each year at no cost through its peer support group, education, consultation, and referral services. Volunteers are welcome in different capacities: as facilitators in peer support groups, as quilters, and in special projects. While major funding for the Caring Place comes from Highmark Blue Cross Blue Shield, some schools, institutions, and groups have also raised funds for the facility. These funds are matched by Highmark dollar for dollar.

Peer support groups meet at the Caring Place and generally meet every other week. Volunteer training sessions for peer support groups are conducted twice a year – during August and January – in preparation for the Spring and Fall/Winter peer support groups. Trained volunteers can also participate in events including the Quilt Dedication Ceremony and Ceremony of Remembrance.

Residents who wish to join peer support groups can call 412-544-6333; those who wish to volunteer can call Meghan O'Mahoney at 412-544-6341. Anyone interested in educational presentations can call Pablo Salinas, Jr. at 412-544-6334. There is no membership fee. All services are provided at no cost. More information is available at: [www.highmarkcaringplace.com](http://www.highmarkcaringplace.com).



#### Junior Achievement

JA Worldwide is a partnership between the business community, educators and volunteers who work to inspire young people to succeed in a global economy. From its beginning in 1919, JA's hands-on, experiential

programs teach the key concepts of work readiness, entrepreneurship and financial literacy to young people all over the world. Junior Achievement of Western Pennsylvania, Inc. is JA's local affiliate. Its business, economic, and financial education programs have reached more than a million students throughout the region.

Volunteer teachers are provided with a training session, easy-to-use materials, and other forms of support to assure a successful experience. For more information, contact Megan Julius, District Operations Manager, at 412-208-4747 ext. 124 or at [mjulius@jwesternpa.org](mailto:mjulius@jwesternpa.org).

*Is your nonprofit organization shown here?*

**If not, contact Bruce Mazzoni:**

**[brucemazzoni@zoominternet.net](mailto:brucemazzoni@zoominternet.net).**

Volunteer service is a cornerstone of community-building. Cranberry salutes the hundreds of men and women listed here who have together devoted tens of thousands of hours to their community.

## KEY

<b>ACS</b>	American Cancer Society	<b>Miracle</b>	Miracle League of Southwestern PA
<b>BB/BS</b>	Big Brothers Big Sisters of Butler County	<b>Paws</b>	Helping Paws
<b>Chamber</b>	Cranberry Area Chamber of Commerce	<b>Rotary</b>	Sunrise Rotary and Cranberry Rotary
<b>CTAA</b>	Cranberry Township Athletic Association	<b>Scouts</b>	Boy Scouts of America and Cub Scouts
<b>CTVFC</b>	Cranberry Township Volunteer Fire Company	<b>Seniors</b>	Cranberry Senior Center
<b>CUP</b>	Cranberry CUP – Community Uniting People	<b>SVJFA</b>	Seneca Valley Junior Football Association
<b>Gleaners</b>	Gleaners Food Bank	<b>SVLA</b>	Seneca Valley Lacrosse Association
<b>Habitat</b>	Habitat for Humanity of Butler County, Southwest Chapter	<b>SVSA</b>	Seneca Valley Soccer Association
<b>Heart</b>	American Heart Association	<b>SVSD BOD</b>	Seneca Valley School District Board of Directors
<b>Library</b>	Volunteers and Friends of Cranberry Public Library	<b>UPMC</b>	UPMC Passavant Cranberry
<b>Lions</b>	Lions Club	<b>Virginia</b>	Race for Virginia and Friends
		<b>VFW</b>	Veterans of Foreign Wars Post 879
		<b>VOICE</b>	Victim Outreach Intervention Center
		<b>Women's</b>	Cranberry Women's Club

2,000	CTVFC	Dave Mack	500	CTAA,CUP	Jim Gaydos	250	ACS/Relay For Life	Jill Matos
1,000	CTVFC	Chris DeCree	500	CUP,CTCC	Bob Gillenberger	250	Rotary,Miracle	Michael Peuler
1,000	CTAA	Joe Decristoforo	500	SVJFA	Sue Gondringer	250	Rotary	David O'Brien
1,000	ACS/ Relay For Life	Amy Fuller	500	CTAA	Tom Gray	250	UPMC	Gillian Flynn
1,000	BSA	Kevin Goliwas	500	Paws	Chris Grubb	250	ACS/Relay For Life	Erica Dipyatic
1,000	Gleaners	Linda Heery	500	SVSA	Rich Hackenberg	250	UPMC	Nancy Boyle
1,000	BSA # 404	Jim Meinert	500	CTVFC	Mike Hanks	250	Rotary	Michael Patsy
1,000	ACS/ Relay For Life	Jodie Mohnkern	500	CUP	Nancy Hans	250	SVJFA,SVLA	Adam Alexander
1,000	SVJFA	Kyle Snyder	500	SVLA	Lori Heinlein	250	Habitat	Rick Alexander
750	CTAA	Ron Cavanagh	500	CTAA	Ed Hogan	250	Miracle, SVLA, SVGLB	Joe Argyros
750	BSA	Paul Ferraro	500	SVSA	Brad Holmes	250	CTAA	Michael Baer
750	CTVFC	Bruce Hezlep	500	SVSA	Scott Jennings	250	CTVFC	Richard Barch
750	CTCC-BC3	Bruce Mazzoni	500	CTVFC	Dennis Kimmel	250	CTVFC	Tim Barch
750	CTAA	Jim McKinney	500	CTAA	Tim Kirkland	250	CTAA	Thomas Beals
750	Miracle League	Mike Sherry	500	CTVFC	Richard Kiscic	250	BSA # 404	Bill Bench
750	CTVFC	Sean Sokolovski	500	CTVFC	John Kontros	250	CTVFC	David Berneburg
750	BSA # 406	Kevin Sparks	500	SVJFA	John Kristobak	250	CTVFC	Jeff Berneburg
750	CTAA-SVSB	Anthony Storti	500	CTVFC	Tim Llewellyn	250	SVJFA	Doug Border
750	CTAA, SVJFA	PhilUher	500	Rotary,CTAA, CTCC	P.J. Lynd	250	CTVFC	Paul Brown
750	CTVFC	Ladies Auxiliary	500	CTVFC	Connor Mack	250	CTVFC	Rich Cancilla
750	UPMC	Stuart Schwilm	500	BSA	Joe Maguire	250	CTVFC	Brittney Clifford
500	UPMC	Jonni Buel	500	Scouts	Joe Maguire	250	CTVFC	Jim Cole
500	CTAA	Lester Aloii	500	SVJFA	Jay Maier	250	SVJFA,CTAA	Scott Cook
500	CUP	Anthony Bertolino	500	SVJFA, CTAA	Nino Marchionda	250	SVLA	Philip Culichia
500	SVJFA	Chris Border	500	CUP	Sheila Mills	250	SVLA	Doug Cundiff
500	SVSA	Pete Breski	500	CTVFC	Tim Morgan	250	CTVFC	Steve Dancisin
500	SVSA	Mike Burger	500	SVJFA/Miracle	Kelley Morrone	250	CTAA	Bill Davis
500	CTVFC	Scott Clarke	500	CTAA	Mike O'Reilly	250	Miracle	Kevin Delaney
500	CTVFC	Larry Clutter	500	CUP	Pam Quiggle	250	CTVFC	Stephen DeVault
500	CUP	Chris Corcoran	500	SVJFA	Kevin Regan	250	CTVFC	Jane Ellis
500	BSA	Dale Curtz	500	CUP	Donna Sever	250	Miracle	Raymond Evers
500	Paws	Mary Ann Engles	500	SVJFA	Robin Shaffer	250	SVJFA	Ron Feil
500	SVLA	Jeff Fyock	500	Habitat	Ed Sharding	250	Habitat,Rotary	Carol Folling
			500	Miracle, PTO	Chris Sherry	250	SVJFA	Roy Geiselhart
			500	SVJFA	Sherri Snyder	250	CTVFC	Ron Gigler
			500	CUP	John Szurley	250	SVJFA	Jeff Gooch
			500	CTAA	Kirk Vaughan	250	CTAA,CUP,SVJFA	Cheyne Gross
			500	SVJFA,SVLA	Bob Wise	250	SVJFA,CTAA	Tony Harris
			500	SVJFA,SVLA	Laura Wise	250	Rotary SVLA, Habitat	Don Hayes
			500	VFW	Phil Stebler	250	CTAA, SVJFA	Carl Heinlein
						250	Paws	Jeff Hodges
						250	CTVFC	Laurie Kepins
						250	CTVFC	Nathan Kimmel
						250	SVJFA	Tom Klingensmith
						250	BSA	Jenn Koken
						250	SVLA, SVJFA	William Kooser
						250		Mark Kopriva

250	CTVFC	Brian Kovac	100	SVJFA	Scott Altimus	100	Seniors	Pat Diemert
250	CTAA	Mike Leon	100	SVJFA	Mark Altsman	100	Seniors	Phil Diemert
250	Habitat	Roy Lonie	100	SVJFA	Bob Beall	100	SVJFA	Lori Donahue
250	CTVFC	Jim McConnell	100	VITA-Librar	Mike Berman	100	Library	Pat Ducharme
250	CTVFC	Bill McDaniel	100	SVJFA	Tom Boozel	100	Virginia	Judy Dudenhaver
250	SVJFA, CTAA	Jeff McLean	100	SVJFA	Kirk Brady	100	Lions	Larry Duncan
250	BSA # 404	Terri Meinert	100	SVJFA	Dustin Bush	100	CTVFC	Chris Eden
250	CTVFC	Mark Nanna	100	Women's	Peggy Davis	100	Library	Carrie Evanstine
250	CTVFC	Carolyn Nelson	100	Gleaners	Pat Dooley	100	Rotary	Patrick Francis
250	CTAA,CUP	Jim Nickel	100	SVJFA	Dave Fisher	100	Rotary	Zane Frund
250	CTAA	Glen O'Connor	100	SVJFA	Jeff Flickinger	100	SVLA	Bina Fyock
250	SVJFA,CTAA	Bob O'Neill	100	SVJFA	Mike Gorseth	100	BB/BS	Greg Galket
250	SVJFA, CTAA, SVLA	Tim O'Shea	100	SVJFA	Tom Hemer	100	Gleaners	Harry Geist
250	CTVFC	Paul Pesanka	100	SVJFA	Matt Kaltenberger	100	CTAA	John Geyer
250	CTAA	Jon Peters	100	SVJFA	Pierre Khoury	100	BB/BS	Crystal Gilliland
250	CTAA	Dan Porter	100	SVJFA,CTAA	Jeff Lasky	100	CTVFC	Constance Giuffre
250	CTVFC	John Pristas	100	SVJFA,CUP	Joe Latess	100	BB/BS	Sandy Goetze
250	CTAA	Greg Quiggle	100	SVJFA	Jason Lawson	100	Lions	Joe Goral
250	CTVFC	John Renyek	100	UPMC	William Leicher	100	SVSB	Eric Gordan
250	CTVFC	Todd Rice	100	SVJFA	Rick Ley	100	BB/BS	John Grable
250	SVJFA, CTAA	Chad Robertson	100	SVJFA	Mike Loebig	100	SVJFA	Sue Greco
250	CTVFC	Colin Robinson	100	Girl Scouts	Karen Lovette	100	CTAA	Peter Greiner
250	CTVFC	Jim Robinson	100	SVJFA	Chris Mager	100	Rotary	Greg Growar
250	SVJFA, CTAA	John Rosa	100	SVJFA	Brad Parrish	100	VITA	David Guo
250	CTVFC	Brandon Ross	100	Gleaners, PTO	Paula Sandherr	100	Miracle	Dick Hadley
250	CTVFC	Ben Ross	100	SVJFA	Rich Simmen	100	Seniors	Bob Haefner
250	CTVFC	Forrest Rothrock	100	SVJFA	John Siwiak	100	Seniors	Hazel Haefner
250	Library	Cindy Salkeld	100	SVJFA	Paul Skalos	100	SVJFA	Brian Haney
250	SVJFA	Al Sanderbeck	100	SVJFA	Scott Stadtfeld	100	CTVFC	Sean Hayden
250	SVLA	Barbara Schreibeis	100	SVJFA	Jeff Stebbins	100	CTAA	Rob Henne
250	SVJFA	Denny Sentelle	100	UPMC	Joan McKnight	100	CTAA	Bernie Herrmann
250	SVSA	Tim Smith	100	Women's	Joyce Duffy	100	SVSB	Bob Hill
250	CTVFC	Bill Spiegel	100	UPMC	Jean Burney	100	CTVFC	Tom Hodder
250	CTAA	Larry Stelitano	100	UPMC	Hub Garver	100	SVJFA	Steve Horn
250	SVSA	Kristi Storti	100	UPMC	Deborah Martinelli	100	CUP	Darlene Howley
250	CTVFC	Betsy Tedesco	100	UPMC	Patricia Mitchell	100	SVJFA	Jamie Inferra
250	CTVFC	Steve Tedesco	100	Girl Scouts	Karin Summers	100	Lions	Bob Isler
250	CTVFC	Shawn Thomas	100	UPMC	Bernie Robinson	100	Lions	Rebecca Isler
250	CTAA	Lori Tuite	100	Girl Scouts	Robin Wingard	100	Paws	Nick Kachmar
250	Miracle	Kris Uher	100	UPMC	Janis Morton	100	SVLA	Walt Kelley
250	SVJFA	Yolanda Venney	100	Girl Scouts	Allison Beresnyak	100	Habitat	Judy Kercovich
250	SVJFA,Rotary,CTAA	Rich Vozel	100	SVJFA	Kim Altsman	100	SVJFA	Kevin Koken
250	Library	Rhonda Waksman	100	CTAA	Larry Alway	100	CTVFC	Maria Kontros
250	CTVFC	David Watkins	100	Habitat	Linda Anderson	100	SVLA, SVJFA	Jody Kopriva
250	SVJFA	Doug Williams	100	Rotary	Jerry Andree	100	Rotary, Miracle	David Kovach
250	Paws	Nikki Yaglowksi	100	Habitat	Alex Aronson	100	SVJFA	Diane Kristobak
250	UPMC	Flo Malone	100	Habitat	Brain Barnhart	100	CTAA	Larry Kristoff
250	CTVFC	Leo Wilson	100	SVJFA	Matt Baum	100	SVLA	Dave Kurywchak
250	ACS/Relay For Life	Cindy Ayres	100	SVJFA	Mike Bellak	100	SVSB	Jeanette Lahm
250	ACS/Relay For Life	Tom Ayres	100	CTAA	Ron Bondo	100	CTAA	Matthew Lindey
250	VFW	Alex Barna	100	Library, LIONS	Judi Boren	100	Habitat	Shirl Lonie
250	Seniors	Sally Blyth	100	Gleaners	Maxine Botti	100	SVJFA	Roberta Love
250	Girl Scouts	Amara Cavagnaro	100	Gleaners	Mike Botti	100	SVJFA	Shannon Luther
250	Gleaners	Chrissy Eaton	100	Library	June Bruschi	100	BB/BS	Darren Lynch
250	Gleaners	Barb Geist	100	BSA # 404	Gary Buia	100	CTAA	Scott Madiera
250	ACS/Relay For Life	Sue Grabowski	100	CTVFC	Ryan Buttermore	100	SVJFA	John Markle
250	Rotary	Keith Hughes	100	SVJFA	Bill Callahan	100	Virginia	Bob Markovich
250	ACS/Relay For Life	Barb Iman	100	Lions	Clyde Cameron	100	SVLA	Chris Marucci
250	Gleaners	Jill Izenas	100	CUP	Sam Carmella	100	Seniors	Julie May
250	Seniors	Carol Jean Keefer	100	CTVFC	Tyler Cattrell	100	SVLA	Michelle McAndrew
250	Seniors	Bill Knebel	100	BB/BS	Glen Chaffee	100	CTVFC	Ray McDonald
250	ACS/Relay For Life	Eve Kriner	100	SVSA	Larry Chapman	100	SVJFA	Jessica McKay
250	Seniors	Roland Meeder	100	BB/BS	Jessica Cherry	100	BB/BS	Leticia Mickey
250	Seniors	George Moore	100	SVJFA	Rebecca Choban	100	CTAA	Art Milkey
250	Seniors	Shirley Moore	100	Virginia	Dave Clark	100	SVJFA	Dale Miller
250	SVJFA	Gene Morrone	100	Virginia	Nancy Clark	100	CUP	Mike Mills
250	ACS/Relay For Life	Janice Neff	100	CTAA	Bill Clinefelter	100	CTAA	Bill Mislan
250	ACS/Relay For Life	Deb Wilson	100	SVJFA	Sherry Codisport	100	SVJFA	Tracy Moniot
			100	Rotary	Jack Cohen	100	SVJFA	Joe Montalbano
100	Scouts	Gary Butia	100	Rotary	Sherry Cook	100	CTVFC	Matt Moran
100	Girl Scouts-CTAA	Christine Bench	100	CTAA	Jessi Cushing	100	CTAA	Vince Motta
100	UPMC	Martha Mesko	100	CTAA	Brian Dadey	100	SVJFA	Greg Narby
100	Rotary	Frank Petrone	100	CTAA	Steve Danik	100	CTCC	Karen Newpol
100	UPMC	Gail McKnight	100	BB/BS	Paul Daubman	100	SVJFA	John Nicotra
100	Girl Scouts	Rebecca Kirsch	100	SVJFA	Brian Davis	100	CTAA	Mark O'Conner
100	SVJFA	Rob Aleva	100	SVJFA	Jennifer Dejeet	100	Seniors	Jane O'Donnell

100	Habitat	Sue Owens	50	SVJFA	Michele Baxa	50	SVLA	Teresa Hickmann
100	Gleaners	Deb Panos	50	CTVFC	Chuck Beattie	50	CTAA	Aaron Hill
100	SVLA	Bill Pantis	50	SVJFA	Leslie Bieter	50	SVJFA	Kaitlin Hoch
100	Habitat	Mike Pechalk	50	CTAA	Dan Blucher	50	CTAA	Eric Holby
100	Gleaners	Mary Pecora	50	SVJFA	Ali Bogdan	50	Lions	Tim Holt
100	SVLA	Fred Peterson	50	SVJFA	Linda Bolena	50	SVLA	Lynn Howard
100	SVJFA	Tony Pityk	50	Chamber	Jim Boltz	50	CTAA	Ray Huber
100	SVLA	Brian Podolec	50	Helping Paws	Nancy Bongiovanni	50	CTAA	John Huddleston
100	BB/BS	Larry Romboski	50	Lions	Bob Boren	50	Virginia	Theresa Hutchinson
100	SVJFA	Tamra Rosa	50	Virginia	Margo Bortnyik	50	CTAA	Richard Inman
100	Lions	Tim Roscoe	50	SVLA	John Bowers	50	VITA	Todd Jordan
100	Heart	Jim Roth	50	Library	Liz Braun	50	SVJFA	Ellen Kay
100	SVJFA	Jeff Rupert	50	SVJFA	Heather Broerman	50	SVJFA	Maddie Kay
100	Habitat	Pat Saunders	50	SVJFA	Becky Brown	50	CTAA	Bill Kearney
100	SVSB	Joe Scalamogna	50	SVJFA	Rachel Brunette	50	Lions	Karl Koebler
100	Habitat	Dave Schloss	50	CTAA	Jim Caraway	50	SVJFA	Lauren Koenig
100	CTAA	Jeff Schwartz	50	Rotary	Erin Carll	50	Lions	Janet Konig
100	BB/BS	Steph Shriver	50	Women's	Kara Challingsworth	50	VITA	Bill Kraus
100	SVJFA	Jen Simik	50	Library	Eva Chao	50	SVJFA	Ashley Kristoff
100	Library, UPMC	Barbara Simon	50	CTAA	Larry Chappell	50	SVJFA	Maddy Kristoff
100	CTVFC	Jim Sines	50	CTHS	Dick Cherry	50	SVJFA	Brittany Larkin
100	CTCC	Michele Skubak	50	SVLA	Joe Chowansky	50	Chamber	John Laslavic
100	SVJFA	George Smith	50	Library	Gail Clakeley	50	Rotary	Don Leach
100	SVJFA	Scott Smith	50	Chamber	Keith Colonna	50	Library	Cathy Lesjack
100	SVJFA	Kim Spears	50	Chamber	Bruce Conley	50	CTAA	Kevin Logan
100	BB/BS	Pam Stanzaki	50	Rotary	Vic Conrad	50	CTAA	John Lopicollo
100	SVJFA	Pam Steinle	50	Habitat	Dale Cook	50	Rotary	James Lopresti
100	Women's	Patty Stevens	50	SVJFA	Jenn Cook	50	CTAA	Scott Luedtke
100	CTAA	Bob Stoffa	50	CTVFC	Rick Cook	50	Habitat	Al Macasaet
100	CTCC,BSA	Dan Storrs	50	SVJFA	Taylor Cready	50	CTHS	Bev Magill
100	SVLA	Sue Succop	50	CTHS	Tom Cully	50	Chamber	Kelley Mahoney
100	SVJFA	Kari Swenson	50	CTAA	Joe Dattoli	50	CTHS	Shirley Mahr
100	CTAA	Jim Tanda	50	SVJFA	Miranda	50	SVJFA	Becky Malkin
100	Library	Juliann Tasick			Deffenbaugh	50	SVJFA	Stacy Markle
100	SVJFA	Dave Tate	50	SVJFA	Jeannine	50	Chamber	Hal Martin
100	SVJFA	Stacey Tate		Dellemonache		50	CTAA	Rick Martin
100	SVJFA	Dave Troianos	50	CTAA	Lou	50	CTAA	Robert Martin
100	BB/BS	Amy Ulewicz		Dellemonache		50	CTCC	Cindy Marzock
100	SVJFA	Jim Veverka	50	CTHS	Helen Dewald	50	CTAA	Tony Matteo
100	CTHS & CTCC	Roy Wagner	50	Library	Pat DiFiore	50	CTAA	Jeff Mattys
100	Library	Edith Washburn	50	Habitat	Bob Dilts	50	CTCC	Conni Mazzoni
100	CTVFC-Girl Scouts	Linda Watkins	50	Rotary	William Dimond	50	SVLA	Marc McAndrew
100	BB/BS	Autumn Weaver	50	SVJFA	Kassie DiPlacido	50	Rotary	Sam McBride
100	SVSB	Jason Weherle	50	Lions	Ruth Dobson	50	Virginia	Joan McConahy
100	SVLA	Judy Wehr	50	Lions	Mike Doerfler	50	CTAA	Amy Mihm
100	AARP	Stu Weimer	50	SVJFA	Tyler Duffy	50	CTAA	Steve Mihm
100	SVJFA	Brian West	50	CTAA	Dave Elias	50	SVJFA	Roni Milich
100	SVLA	Ed Wirth	50	Rotary	Jeffrey Elser	50	Rotary	John Milius
100	Library	Nancy Wright	50	SVJFA	Ashley Evans	50	SVJFA	Amy Millward
100	Seniors	Bob Carrara	50	SVJFA	Colleen Febbraro	50	CTAA	Glenn Moeller
100	Seniors	Hedy Carrara	50	Library	Cheryl Ferraro	50	BB/BS	Laurie Mohler
100	Seniors	Gerry Crehan	50	SVJFA	Jamie Ferry	50	Library	Janice Molnar
100	Seniors	Dee Harlan	50	CTAA	Bill Fish	50	CTAA	Dave Moniot
100	Seniors	Bernie Kuszajewski	50	SVJFA	Kristen Fisher	50	CTCC	Gretchen Moran
100	Seniors	Frank Kuszajewski	50	SVJFA	Mel Flickinger	50	SVJFA	Jess Morris
			50	CTAA	Alan Funovits	50	Rotary	Jeff Myers
50	Women's	Jan Brown	50	SVLA	Teresa Gadberry	50	SVJFA	Jenny Natoli
50	VFW	Paul Hughes	50	SVJFA	Karin Geiselhart	50	Lions	Andy Newell
50	Girl Scouts	Sara Kennelly	50	SVJFA	Alix Gondringer	50	Habitat	Brandon Nock
50	VFW	Bill Dinning	50	Lions	Sally Good	50	Habitat	Dave Nock
50	VFW	Moon Mullins	50	CTAA	Tom Good	50	VFW	George &
50	VFW	Don Vasko	50	Habitat	David Graham			Pat O'Brien
50	VFW	Rex Brown	50	SVJFA	Kelsey Graham	50	CTAA	Shawn O'Donnell
50	Women's	Sandy Carroll	50	CTHS	Peggy Grinager	50	SVJFA	Hannah
50	Seniors	Deb Rammage	50	Library	Evelyn Grubbs			O'Donough
50	VFW	Al Sovek	50	Lions	Chuck Haefner	50	SVJFA	Kathie O'Neill
50	VFW	Jack Affolder	50	Lions	Regis Haefner	50	Habitat	Dave Otto
50	CTAA	Jim Albert	50	Chamber	Mike Hall	50	SVJFA	Bernie Palumbo
50	SVJFA	Hannah Altzman	50	SVJFA	Haylie Hamilton	50	Rotary	Karen Panetta
50	CTVFC	Angie Angeloni	50	SVJFA	Kelly Harris	50	Virginia	Wendy Parrish
50	CTAA	Mike Annichiarico	50	Virginia	Julie Hart	50	Rotary	David Pascarella
50	Rotary	Ronald Antonucci	50	CTAA	Bill Hartman	50	CTAA	Mike Paschall
50	Chamber	Susan Balla	50	SVJFA	Colleen Hayes	50	Women's	Kathleen Perry
50	Chamber	Mary Lou Barud	50	CTAA	Ray Hensler	50	SVJFA	Shannon Perry
50	Chamber	Gary Basilone	50	SVJFA	Beth Herrmann	50	SVLA	Cece Peterson
50	Seniors	Aimee Bauman	50	SVLA	George Hickmann	50	SVJFA	Tracy Petrosky

50	Virginia	Dave Porco
50	Gleaner's	Dan Powell
50	CTAA	Eric Prex
50	Library	Jane Profeta
50	SVJFA	Katy Raykovics
50	Chamber	Kim Reuss
50	Women's	Barbara Rickert
50	SVJFA	Shannon
		Robertson
50	SVLA	Barry Rotz
50	Library	Dorothy Rowberg
50	Habitat	Dave Rubinosky
50	SVJFA	Brooke Sanfilippo
50	Rotary	Daniel Santoro
50	Lions	Ed Sarver
50	SVJFA	Kim Sayers
50	Chamber	Cletus Scalo
50	Seniors	Peg Schorr
50	Library	Ethel
		Schrecengost
50	Rotary	Walt Scott
50	CTAA	Tom Senka
50	SVJFA	Kass Sever
50	CTAA	Tom Shaffer
50	CTAA	Dave Shirley
50	SVJFA	Lora Siwiak
50	CTAA	Bill Slusser
50	Rotary	Elaina Smiley
50	Seniors	Theresa Smith
50	CTAA	Joe Smithco
50	CTAA	Steve Spotts
50	BB/BS	Mike Stack
50	Library	Jan Stevens
50	Gleaner's	George Stright
50	Gleaner's	Ron Stright
50	CTAA	Bernie Sullivan
50	Habitat	Adam Swarts
50	SVJFA	Ginny Talaat
50	SVLA	Jeanlynn Thomas
50	SVJFA	Paige Thomas
50	SVJFA	Penney Tieken
50	BB/BS	Scott Tisdall
50	CTAA	Bob Tomer
50	CTAA	Jeff Vargo
50	CTAA	Bob Vaughan
50	SVJFA	Lori Veltri
50	Rotary	Margaret VonDerau
50	Lions	Russ Vorpe
50	SVJFA	Alissa Vozel
50	Heart	Scott Waitlevertch
50	Lions	Larry Walker
50	SVJFA	Mallory Walmsey
50	CTAA	Bryan Wary
50	Seniors	Elaine Wasko
50	Chamber	Joe Weis
50	CTAA	Ron Wiesner
50	CTAA	Brad Williams
50	SVJFA	Amanda Wise
50	SVJFA	Megan Wise
50	CTAA	John Wolfe
50	Library	Cynthia Woodward
50	CTHS	Kathy Zagorac
50	Rotary	Robert Zahner

# Reflections on Volunteerism

*No person was ever honored for what he received.*

*Honor is given by what he gave.*

CALVIN COOLIDGE



*You make a living by what you get, but you make a life  
by what you give.*

WINSTON CHURCHILL



*It's easy to make a buck. It's a lot tougher to make a difference.*

TOM BROKAW



*He who does nothing for others does nothing for himself.*

GOETHE



*I don't know what your destiny will be, but one thing I do know: The only  
ones among you who will be really happy are those who have sought and  
found how to serve.*

Albert Schweitzer



*Destiny is not necessarily what we get out of life, but rather, what we give.*

CARY GRANT



*The best way to find yourself is to lose yourself in the service of others.*

GHANDI



*Everyone can be great, because everyone can serve.*

MARTIN LUTHER KING, JR.



*You have not lived until you have done something  
for someone who can never repay you.*

ANONYMOUS

**About the Cover:** The theme of this year's CTCC annual report is how individuals can make a difference in their community. We've illustrated it with the image of a small cranberry making a big splash as it hits the water. It is a metaphor for the beneficial impact each of us can have on our community life.

# C'mon, push our buttons!

Call for special offers on TV, Internet & Phone.

Residential **1.866.989.2255**  
Business **1.800.500.9000**

More than a quarter-million  
homes and businesses depend on us for  
**TV • Internet • Phone**

 **Consolidated**  
communications  
consolidated.com



Our third  
consecutive  
year as the Proud  
sponsor of Cranberry  
Community Days!



Cranberry Township Community Chest  
2525 Rochester Road, Suite 450  
Cranberry Township PA 16066

[www.ctccchest.org](http://www.ctccchest.org)

Postal Patron  
Cranberry Township, PA 16066

PRSRT STD  
US POSTAGE  
**PAID**  
PERMIT #25  
CRANBERRY TWP, PA